

Delta Region Community Health Systems Development (DRCHSD) Program

National Health Service Corps



The Center's Purpose

The [National Rural Health Resource Center \(The Center\)](#) is a nonprofit organization dedicated to sustaining and improving health care in rural communities. As the nation's leading technical assistance and knowledge center in rural health, The Center focuses on five core areas:

- Transition to Value and Population Health
- Collaboration and Partnership
- Performance Improvement
- Health Information Technology
- Workforce



ruralcenter.org


National
Rural Health
Resource Center

DRCHSD Program Supported by FORHP and DRA



U.S. Department of Health & Human Services



HRSA

Federal Office of Rural Health Policy

This project is supported by the Health Resources and Services Administration ([HRSA](#)) of the U.S. Department of Health and Human Services ([HHS](#)) under grant number U65RH31261, Delta Region Health Systems Development, \$10,000,000 (0% financed with nongovernmental sources). This information or content and conclusions are those of the author and should not be construed as the official position or policy of, nor should any endorsements be inferred by [HRSA](#), [HHS](#) or the U.S. Government.

ruralcenter.org

National
Rural Health
Resource Center

Diversity, Equity, Inclusion, & Anti-racism



Building a culture where difference is valued

The Center is committed to DEI and anti-racism. We create an environment that reflects the communities we live in and serve; a place where everyone feels accepted and empowered to be their full, authentic selves; and where everyone belongs.

We understand the impact of and seek to defeat racism and discrimination in ourselves, our workplace, and the world. This guides how we cultivate leaders, build our programs and resources, and deliver our technical assistance.

We are an organization that honors, celebrates, and respects all dimensions of diversity. These principles are central to our mission and to our impact.

[Read more at ruralcenter.org/DEI](https://ruralcenter.org/DEI)

ruralcenter.org

Upcoming DRCHSD Webinars

- April 5

[Federal Office of Rural Health Policy Webinar Part 1: Welcome to FORHP!](#)

- April 12

[Federal Office of Rural Health Policy Webinar Part 2: Federal Grants 101](#)



NHSC 101

Update on HRSA Health Workforce Opportunities for Delta Regional Commission

March 30, 2023

Clark Conover, MHA | Supervisor

Division Regional Operations(DRO) – Kansas City
Bureau of Health Workforce (BHW)
Health Resources and Services Administration (HRSA)



Health Resources and Services Administration (HRSA)

- **Supports more than 90 programs** that provide health care to people who are geographically isolated, economically or medically vulnerable
- **HRSA does this through grants and cooperative agreements** to more than 3,000 awardees, including community and faith-based organizations, colleges and universities, hospitals, state, local, and tribal governments, and private entities
- **Every year, HRSA programs serve tens of millions of people**, including people living with HIV/AIDS, pregnant women, mothers and their families, and those otherwise unable to access quality health care



Bureau of Health Workforce (BHW)

- BHW improves the health of underserved populations by strengthening the health workforce and connecting skilled professionals to communities in need.
- We approach our grant awards, loan repayment, and scholarship programs as a continuum of education, training and service.
- Following this approach, we work to create a well-distributed and robust workforce supply of diverse, culturally competent health professionals who provide quality health care in high-need areas of the U.S. and its territories.
- Specifically, our scholarship and loan repayment programs help underserved communities recruit and retain primary health care providers.



Bureau of Health Workforce (BHW) Aims

BHW strives to achieve four aims in its program planning, data analysis and program evaluation.

Access

- Make it easier for people to access health care

Supply

- Balance the supply of health workers with the demand for care

Distribution

- Improve distribution of the health workforce

Quality

- Improve the quality of the health workforce and the care they provide

The National Health Service Corps

For more than 50 years, the NHSC has worked to:

- **Build healthy communities by supporting qualified health care providers** dedicated to working in areas of the United States and its territories with limited access to primary health care, regular dental and behavioral health care, and preventive screenings.
- **Improve access to these crucial services** by practicing in health professional shortage areas across the country.
- **Help clinicians pay off their health professional student loan debt in exchange for their service in high-need areas** through scholarships and loan repayment programs.



National Health Service Corps: Milestones

1970

- NHSC created first scholarships
- Grew from 181 providers to over 1,800 in the first year
- Budget 10 times larger by end of decade

1980

- Loan Repayment Program launched
- Nearly 6,700 scholarships awarded
- New community-based programs begin hiring NHSC providers directly

1990

- Early 1990s: Only 1,000 providers serve due to budget reduction
- Mental health disciplines added to LRP
- Only 2,500 providers in service by end of decade

2000

- Increased funding supported unprecedented growth in field strength
- Physicians make up the largest discipline

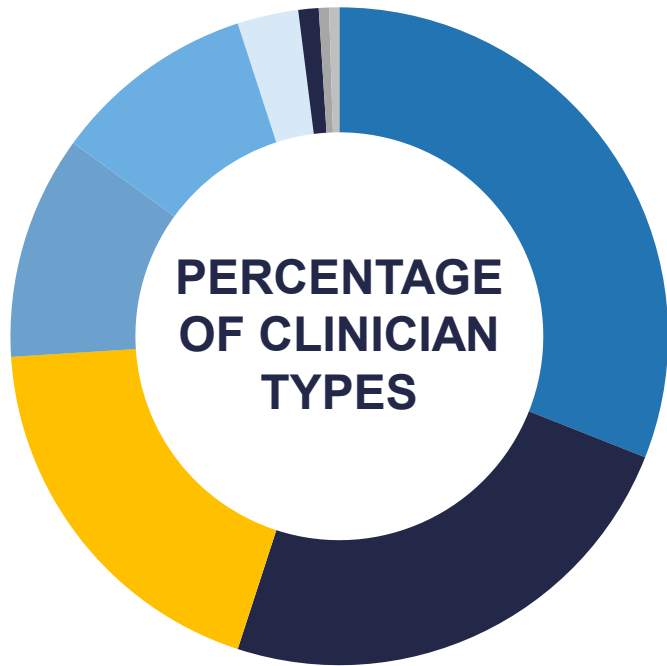
2010

- Patient Protection and Affordable Care Act of 2010 permanently reauthorizes the NHSC and creates a mandatory funding stream, as well as adding a part-time service option for members

2020

- American Rescue Plan funds result in record field strength numbers – more than 20,000 participants
- [Field strength clinicians dashboard](#) comes online with current, analyzable provider data
- Nurses make up the largest discipline

National Health Service Corps: *Now**

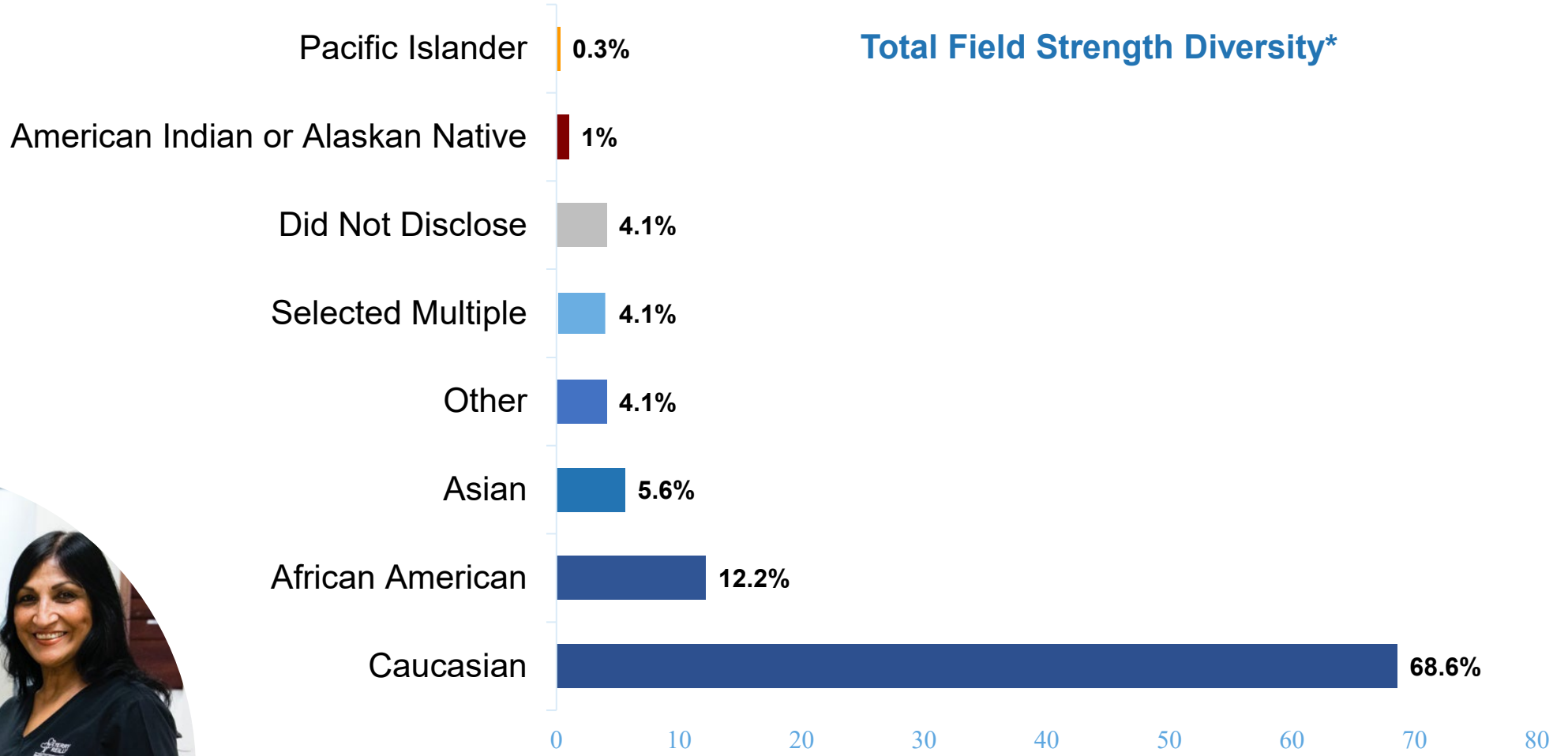


**As of September 30, 2022*

- 47% Behavioral Health Providers
- 20% Nurse Practitioners
- 13% Physicians
- 8% Dentists
- 8% Physician Assistants
- 2% Registered Hygienists
- 1% Certified Nurse Midwives
- <.3% Registered Nurses
- <.6% Pharmacists



National Health Service Corps: Now

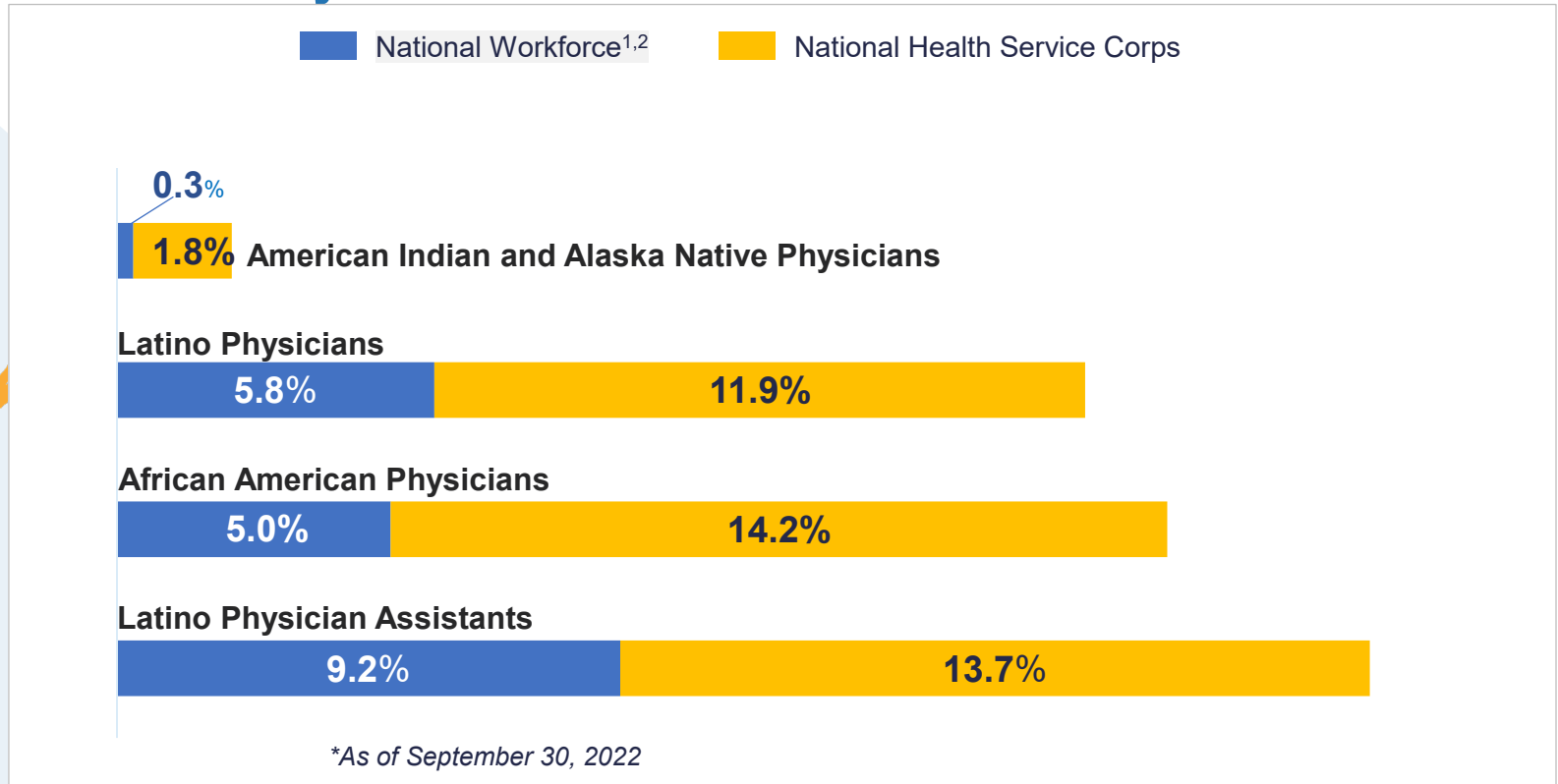


**As of September 30, 2022*

Note: Of the respondents, 13% of the field strength identifies as Hispanic.



Primary Health Care*



1 Association of American Medical Colleges, *Diversity in Medicine: Facts and Figures*, 2019

2 U.S. Bureau of Labor Statistics, *Labor Force Statistics from the Current Population Survey*, January 2022

Mental & Behavioral Health*

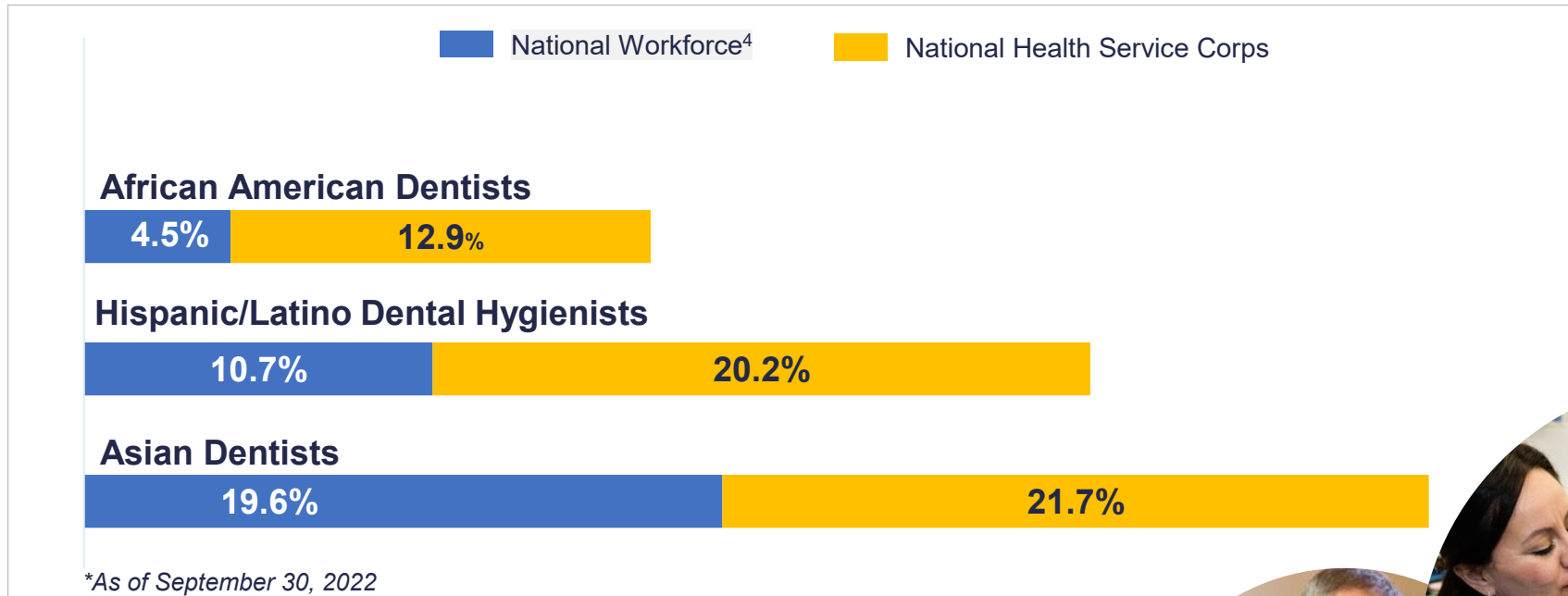


*As of September 30, 2022

³ U.S. Bureau of Labor Statistics, Labor Force Statistics from the Current Population Survey, January 2022



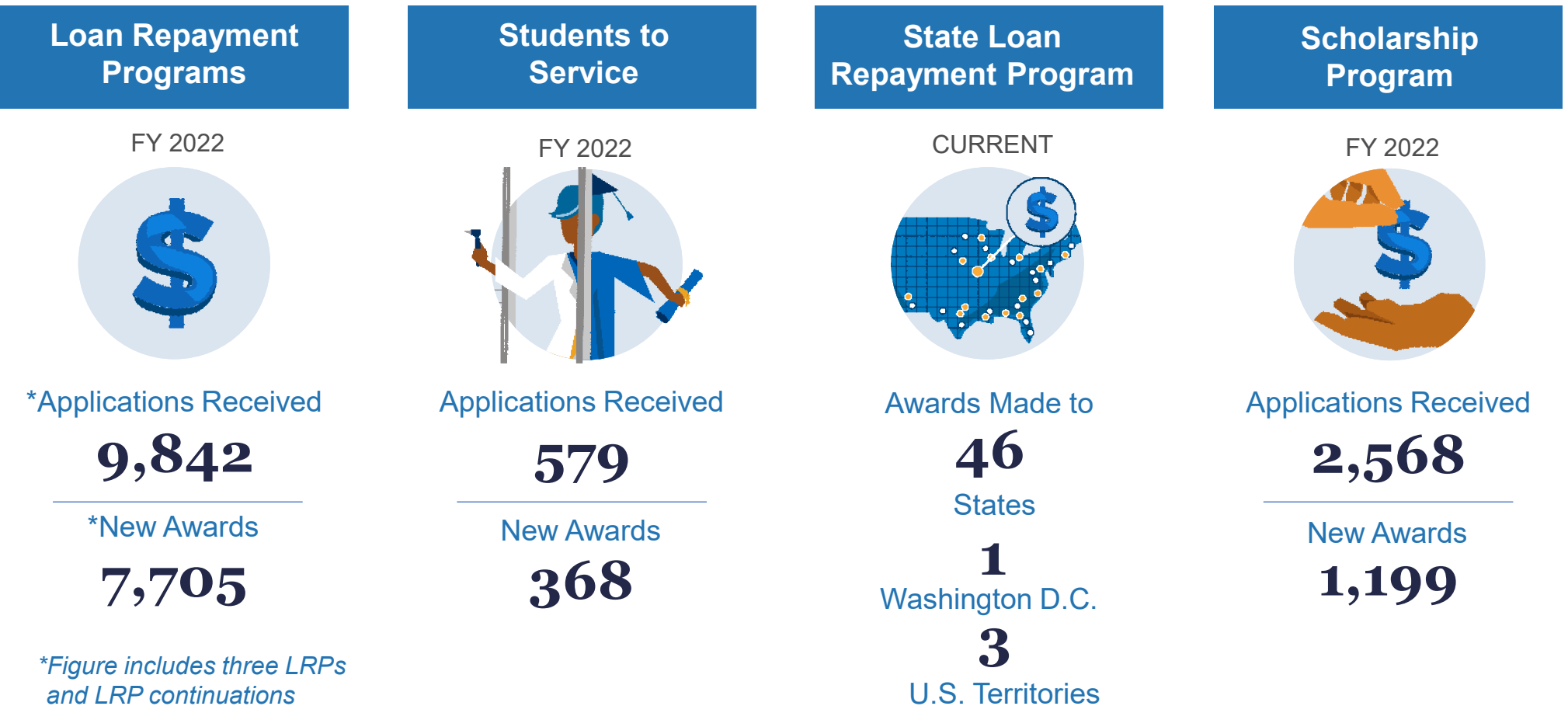
Oral Health*



⁴ U.S. Bureau of Labor Statistics, Labor Force Statistics from the Current Population Survey, January 2022



Applications and Awards



Impact of the NHSC: Largest class in program history

More than
20,000
NHSC members are currently providing care to almost
21
million
people in the U.S.

- **In 2021 and 2022**, we awarded every eligible applicant making this our largest class of clinicians ever.
- Many NHSC members continue to serve in areas of greatest need beyond their service obligation.



Rural Health Workforce



National Health Service Corps and Nurse Corps

>7,600 serve in rural communities



Advanced Nursing Education— Nurse Practitioner Residency Program

42% of training sites in rural areas



Rural Residency Planning and Development Program

**>50% of residency time at rural
sites**



Teaching Health Center Graduate Medical Education Program

**>93% train in medically underserved
or rural communities**



Behavioral Health Workforce Development Programs

**50% gain experience in treating
substance use disorders**



Agenda

1: Loan Repayment Programs

- *Original* Loan Repayment Program
- Substance Use Disorder Workforce Loan Repayment Program
- Rural Community Loan Repayment Program
- Students to Service Loan Repayment Program

2: Scholarship Program

3: Member Stories

4: Other Loan Repayment and Scholarship Programs

5: Support and Resources

Section 1

LOAN REPAYMENT PROGRAMS

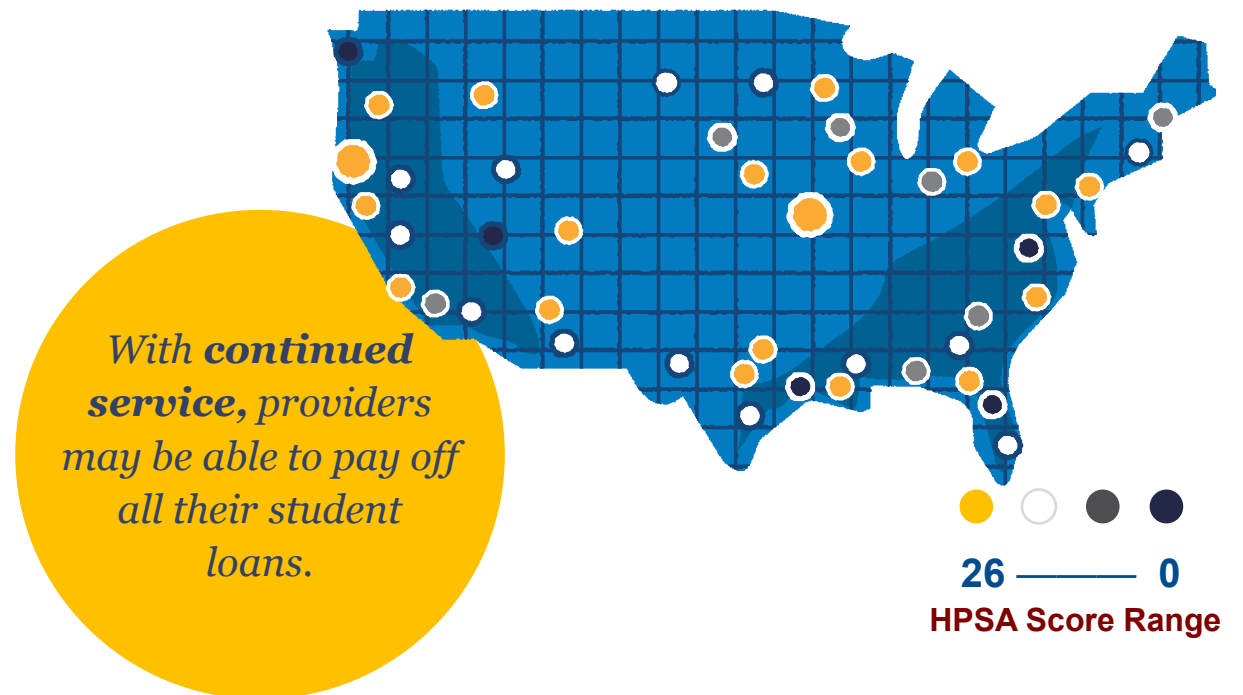


Loan Repayment Program

UP TO
\$50,000
FOR 2 YEARS OF
SERVICE

Offers fully trained primary care clinicians loan repayment in exchange for service in an area of greatest need, called a Health Professional Shortage Area (HPSA).

Higher HPSA Score = Higher Need



Applicants working at NHSC-approved sites with higher HPSA scores are given priority.

Maternity Care Target Areas (MCTAs)

New for the FY23 NHSC LRP Application Cycle

- Designated score within existing primary care Health Professional Shortage Areas (HPSAs)
- The new score applies to:
 - Providers of obstetrics/gynecology
 - Family medicine physicians who practice obstetrics on a regular basis
 - Certified nurse midwives

MCTA Score Range

25 ————— 0

Higher score = Greater need



Loan Repayment Program

Providers Receive Loan Repayment in Addition to a Competitive Salary from Their Employers

1

Providers find a job at an NHSC-approved site

2

Apply to the NHSC for loan repayment



Watch the NHSC Site Video on the "HRSA Tube" YouTube channel.

Find positions at NHSC-approved sites using the Health Workforce Connector:

<https://connector.hrsa.gov/>



Loan Repayment Program

Eligibility



U.S. citizen or national



Currently work,
or applying to work,
at an NHSC-approved site



Have unpaid government
or commercial loans for
school tuition, reasonable
educational costs, and
reasonable living expenses,
segregated from all other
debts



Licensed to practice
in state where employer
site is located

Must be licensed in one of the following eligible disciplines:

- Physician (MD or DO)*
- Nurse practitioner (primary care)
- Certified nurse-midwife*
- Physician assistant
- Dentist (general or pediatric)
- Registered dental hygienist
- Psychiatrist
- Psychologist (health service)
- Licensed clinical social worker
- Psychiatric nurse specialist
- Marriage and family therapist
- Licensed professional counselor

**The new MCTA score applies to OB/GYNs, family practices with obstetrics services and certified nurse midwives.*

SUBSTANCE USE DISORDER WORKFORCE LOAN REPAYMENT PROGRAM



Substance Use Disorder Workforce Loan Repayment Program

Expands and improves access to quality opioid and substance use disorder treatment in underserved areas nationwide



AWARDS UP TO
\$75,000
FOR A 3-YEAR SERVICE
COMMITMENT

- Must be trained and licensed to provide SUD treatment at NHSC-approved SUD treatment facilities

Substance Use Disorder Workforce Loan Repayment Program

Eligibility



Must be a U.S. citizen or national working at an NHSC-approved substance use disorder (SUD) treatment facility



Eligible Providers:

Medicine: MD, DO, NP, CNM, PA
Mental/Behavioral Health: HSP,
LCSW, PNS, MFT, LPC
**Substance Use Disorder
Counselors**
Registered Nurses
Pharmacists



Must be trained and licensed to provide SUD treatment



Must have unpaid government or commercial loans for school tuition, reasonable educational and living expenses, segregated from all other debts

Priority is given to applicants:

- Currently providing care in an opioid treatment program;
- Who have specialized substance use disorder training, e.g., an X-waiver;
- Who have a license or certification in substance use disorder interventions, such as master's-level substance use disorder counselors.

RURAL COMMUNITY LOAN REPAYMENT PROGRAM



Rural Community Loan Repayment Program

*Expands and improves access to quality opioid and substance use disorder treatment in **rural areas***



AWARDS UP TO
\$100,000
FOR 3-YEAR SERVICE
COMMITMENT

- Must be trained and licensed to provide SUD treatment at NHSC-approved rural SUD treatment facilities

Rural Community Loan Repayment Program

Eligibility



Must be a U.S. citizen or national working at an NHSC-approved rural substance use disorder (SUD) treatment facility



Eligible Providers:
Medicine: MD, DO, NP, CNM, PA
Mental/Behavioral Health: HSP, LCSW, PNS, MFT, LPC
Substance Use Disorder Counselors
Registered Nurses
Pharmacists
Nurse Anesthetists



Must be trained and licensed to provide SUD treatment



Must have unpaid government or commercial loans for school tuition, reasonable educational and living expenses, segregated from all other debts

Priority is given to applicants:

- Serve at a Rural Communities Opioid Response Program (RCORP) Consortium Member facility;
- Who have specialized substance use disorder training, e.g., an X-waiver;
- Who have a license or certification in substance use disorder interventions, such as master's-level substance use disorder counselors.

STUDENTS TO SERVICE LOAN REPAYMENT PROGRAM





Students to Service Loan Repayment Program

Award

The NHSC offers up to \$120,000 in tax-free loan repayment for 3 years of full-time service or 6 years of half-time service. Loan repayment begins during residency. With continued service, eligible providers may be able to pay off all their student loans.



Students to Service Loan Repayment Program

Eligibility – MD, DO



U.S. citizen or national



Full-time student in the final year at an accredited school, pursuing a degree in medicine (MD or DO)



Must complete an accredited primary medical care residency in an NHSC-approved specialty (Internal Medicine, Family Practice, Pediatrics, OB/GYN, Psychiatry and Geriatrics)



Have unpaid government or commercial loans for school tuition, reasonable educational expenses, and reasonable living expenses, segregated from all other debts

Students to Service Loan Repayment Program

Eligibility – DDS, DMD



U.S. citizen or national



Full-time student in the final year at an accredited school, pursuing a degree in dentistry (DDS or DMD)



Encouraged (but not required) to complete an accredited postgraduate training in an NHSC-approved specialty (General Practice, Advanced Education in General Dentistry, Pediatric Dentistry, Public Health Dentistry, Geriatrics Dentistry Fellowship)



Have unpaid government or commercial loans for school tuition, reasonable educational expenses, and reasonable living expenses, segregated from all other debts

Students to Service Loan Repayment Program

Eligibility – NP or CNM



U.S. citizen or national



Full-time student in the final year at an accredited school, pursuing a degree in nursing (NP or CNM)



Encouraged (but not required) to complete an accredited postgraduate training in an NHSC-approved specialty (Approved postgraduate training for nurse practitioners and certified nurse midwives: a one-year postgraduate training in a community-based care setting.)



Have unpaid government or commercial loans for school tuition, reasonable educational expenses, and reasonable living expenses, segregated from all other debts

Eligibility – PA



U.S. citizen or national



Full-time student in the final year at an accredited school, pursuing a physician assistant degree (PA)



Encouraged (but not required) to complete an accredited postgraduate training in an NHSC-approved specialty (Approved postgraduate training for physician assistants: a one-year postgraduate training in a community-based care setting.)



Have unpaid government or commercial loans for school tuition, reasonable educational expenses, and reasonable living expenses, segregated from all other debts

Section 2

SCHOLARSHIP PROGRAM



Scholarship Program

*Students
pursuing careers
in primary health care
can receive a
Scholarship now
and serve later*



Must be pursuing:

- A degree in medicine (allopathic or osteopathic) ;
- A degree in dentistry; or
- A postgraduate degree or postgraduate certificate from a school or program in nurse-midwifery education, physician assistant (PA) education, or nurse practitioner (NP) education specializing in adult medicine, family medicine, geriatrics, pediatrics, psychiatric-mental health, or women's health.

Scholarship Program

YEARS OF
SUPPORT
=
YEARS OF
SERVICE

Scholars commit to serve at an NHSC-approved site in a high-need area upon completion of their training: **2- to 4-year service commitment depending on years of support.**



Scholarship Program

Eligibility



U.S. citizen or national



Full-time student at an accredited school, pursuing a degree in:

- Medicine (DO or MD)
- Dentistry (DMD or DDS)
- Nurse practitioner
- Certified nurse-midwife
- Physician assistant (primary care)



Physicians are required to complete postgraduate training in an accredited primary care program.

Dentists, Advanced Practice Registered Nurses and Physician Assistants are encouraged (but not required) to complete an accredited postgraduate training in an NHSC-approved specialty.



*Scholarship pays tuition, a monthly stipend (taxable) and other reasonable educational and living expenses in exchange for a minimum of two (2) years of full-time service.

*Available up to 4 years

NHSC Scholar Site Selection

- Service begins upon graduation (and completion of any required primary care residency).
- **The NHSC works with Scholars to find a practice site** that's right for them and meets the required minimum HPSA score.
- When in service, Scholars earn a competitive salary paid by their site.



Section 3

MEMBER STORIES



 **YouTube** [Check out these provider's stories on YouTube](#)



*Elizabeth
Charlatt,
LCSW*



*Dr. Maria
Martinez,
DMD*



*Dr. Brian
Freeman,
MD*

How NHSC Awards are Determined



[Click to view video on YouTube](#)

Section 4

OTHER LOAN REPAYMENT AND SCHOLARSHIP PROGRAMS



Other Loan Repayment and Scholarship Programs

State Loan Repayment Program (SLRP)

- Provides cost-sharing grants to states to operate their own loan repayment programs for primary care providers in underserved areas.
- **Eligible disciplines** vary, but may include:
 - Physicians,
 - Nurse practitioners,
 - Physician assistants,
 - Dental professionals,
 - Registered nurses,
 - Mental, behavioral health professionals,
 - Pharmacists, and
 - Substance use disorder counselors.



Other Loan Repayment and Scholarship Programs



- ✓ Original Loan Repayment Program
- ✓ Substance Use Disorder Workforce Loan Repayment Program
- ✓ Rural Community Loan Repayment Program
- ✓ Students to Service Loan Repayment Program
- ✓ Scholarship Program
- ✓ State Loan Repayment Program

- ✓ Loan Repayment Program
- ✓ Scholarship Program

- ✓ Native Hawaiian Health Scholarship Program
- ✓ Faculty Loan Repayment Program
- ✓ Scholarships for Disadvantaged Students
- ✓ Nurse Faculty Loan Repayment Program

Loan Repayment Programs (LRPs) For Nurses Comparison

The NHSC loan repayment programs (LRPs) below include:

- NHSC Loan Repayment Program (NHSC LRP)
- NHSC Substance Use Disorder Workforce Loan Repayment Program (NHSC SUD Workforce LRP)
- NHSC Rural Community Loan Repayment Program

DISCIPLINES		
Position	NHSC LRPs	Nurse Corps LRP
Primary Care Nurse Practitioner	X	X
Certified Nurse-Midwife	X	X
Psychiatric Nurse Specialist	X	X
Registered Nurse ¹	X	X
Clinical Nurse Specialist	-	X
Nurse Anesthetist ²	X	X
Nurse Faculty	-	X

SERVICE COMMITMENT		
Frequency	NHSC LRPs	Nurse Corps LRP ⁴
Full-time	2 Years NHSC LRP - ≤ \$50,000	2 Years (Full-time only) 60% of total qualifying educational loan balance 3 rd Year (Full-time only) 25% additional repayment of original loan balance
Full-time	3 Years NHSC SUD Workforce LRP – ≤ \$75,000	
Full-time	3 Years NHSC Rural Community LRP – ≤ \$100,000	
Half-time	2 Years NHSC LRP - ≤ \$25,000	
Half-time	3 Years NHSC SUD Workforce LRP ≤ \$37,500	
Half-time	3 Years NHSC Rural Community LRP ≤ \$50,000	
Full- or Half-time	1 or more additional years at your NHSC site may qualify for additional repayment funds ³	

¹ Registered Nurses are eligible for the NHSC SUD Workforce LRP and NHSC Rural Community LRP only.

² Certified Nurse Anesthetists are only eligible for the NHSC Rural Community LRP.

³ NHSC SUD Workforce LRP and NHSC Rural Community LRP participants are not eligible for one-year continuations but may apply to the NHSC LRP upon completion of their initial obligation.

⁴ NHSC loan repayment awards are not taxable; the full Nurse Corps loan repayment award is taxable. Federal taxes are deducted directly; state/local taxes are the responsibility of the participant.

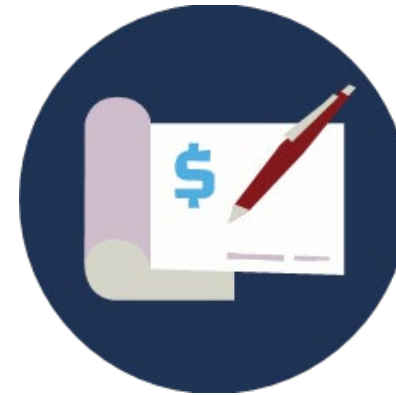
Loan Repayment Programs (LRPs) For Nurses Comparison

APPROVED SITE TYPES	
NHSC-Approved Sites/Facilities	Nurse Corps-Approved Sites
<p>Must work at an NHSC-approved service site located in a Health Professional Shortage Area (HPSA).</p>	<p>Must work in a public or private nonprofit Critical Shortage Facility, which is a health care facility located in, designated as, or serving a primary care or mental health HPSA. Nurse faculty must be employed by an eligible public or private nonprofit school of nursing.</p>
<p>NHSC SUD Workforce LRP and NHSC Rural Community LRP participants must work at an NHSC-approved SUD treatment facility located in a Health Professional Shortage Area (HPSA).</p>	



About Nurse Corps

- **The Nurse Corps offers programs to help address shortages of nurses across the country. These include:**
 - loan repayment to nurses who work in facilities experiencing a critical shortage of nurses;
 - loan repayment to nurse faculty; and
 - scholarships to students enrolled—or accepted for enrollment—in nursing degree programs.



LOAN REPAYMENT PROGRAM



SCHOLARSHIP PROGRAM

Nurse Corps Field Strength



- The Nurse Corps program helps alleviate the critical shortage of nurses in high-need areas across the U.S. and its territories.
- Currently, there are more than 3,900 Nurse Corps participants serving at over 2,500 sites.
- Nurse Corps participants provide care to more than 4 million patients annually in urban, rural, and tribal areas.
- About 23% of our Nurse Corps clinicians work at a community health center or a community health center look-alike

Types of Critical Shortage Facilities (CSF)

- **Hospitals:**

- Disproportionate Share Hospital
- Private Hospital
- Public Hospital

- **Community-Based Settings:**

- Ambulatory Surgical Center
- American Indian Health Facilities
- Community Mental Health Center
- End Stage Renal Disease (ESRD) Dialysis Centers
- Federally Qualified Health Center
- Free and Charitable Clinics
- Home Health Agency
- Hospice Program
- Native Hawaiian Health Center
- Nurse Managed Health Clinic/Center
- Residential Nursing Home
- Rural Health Clinic
- Small Rural Hospital
- State or Local Health Department
- Urgent Care Center



Nurse Corps Scholarship Program (1 of 4)



- The Nurse Corps offers scholarships to nursing degree students who commit to practice at health care facilities with a critical shortage of nurses upon graduation.

Nurse Corps Scholarship Program (2 of 4)

- You may be eligible for a scholarship if you are a student accepted or enrolled in a diploma, associate, baccalaureate, or graduate degree nursing program.
- In exchange, you must work at an eligible facility with a critical shortage of nurses—a Critical Shortage Facility (CSF)—upon graduation.

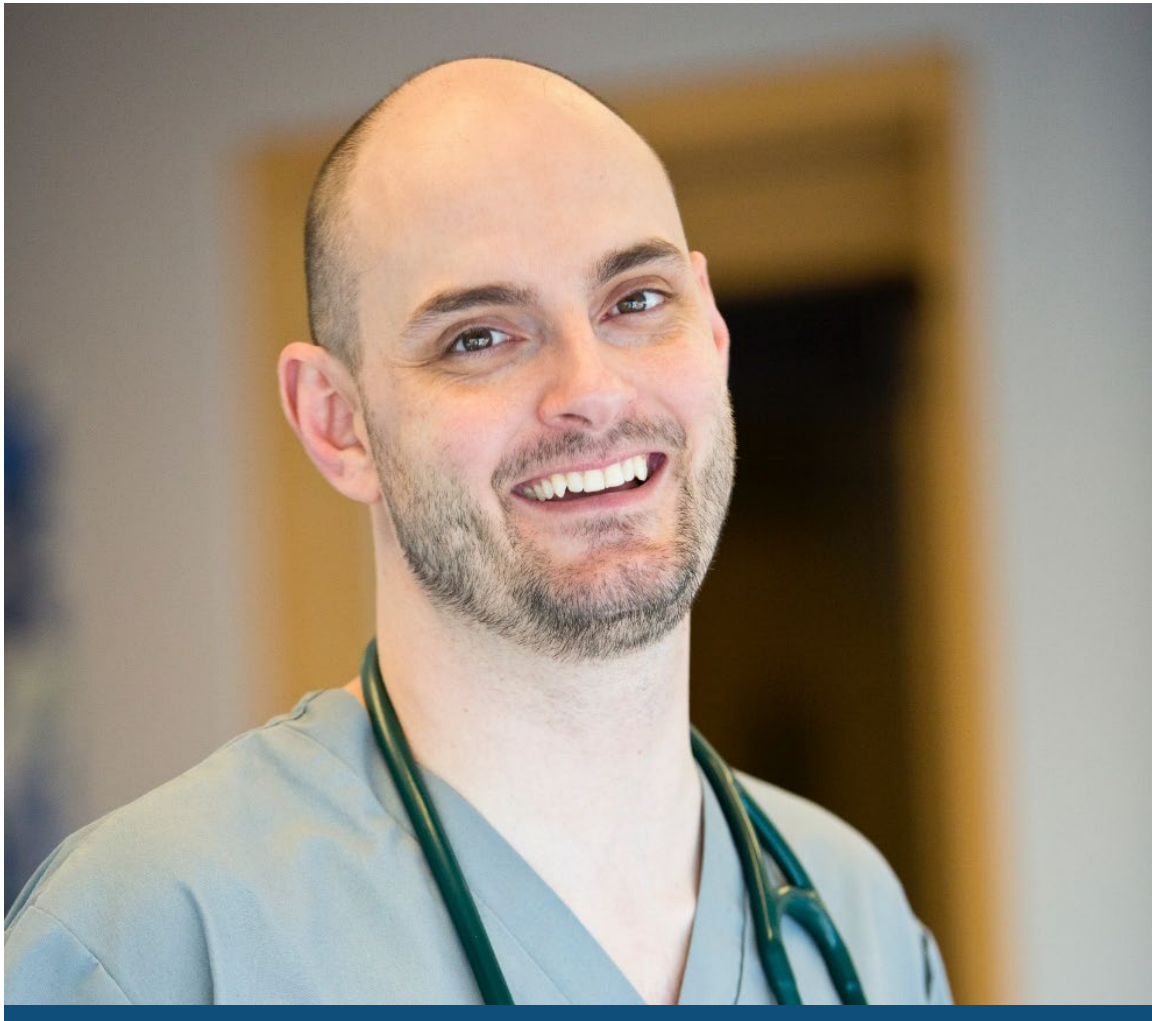
• Maximum of
4 YEARS
of Support

Nurse Corps Scholarship Program (3 of 4)

- Nurse Corps scholarships cover the following costs:
 - tuition;
 - eligible fees;
 - annual payment for other reasonable costs, such as books, clinical supplies/instruments and uniforms; and
 - a monthly stipend.

• **Maximum of**
4
YEARS
of Support

Nurse Corps Scholarship Program (4 of 4)



- The Nurse Corps Scholarship Program offers a funding preference for applicants with the greatest financial need.
- We determine an applicant's financial need based on the Expected Family Contribution generated through the Free Application for Federal Student Aid (FAFSA).



SCHOLARSHIP PROGRAM

Section 5

SUPPORT & RESOURCES



Support & Resources – Approved Sites

NHSC-Approved Sites

- NHSC clinicians serve at approved sites throughout the nation.
- NHSC-approved sites are outpatient facilities providing primary care medical, dental, and/or mental and behavioral health services.
- The facility may be located in a rural, urban or tribal community.
- To apply to become an NHSC site, the facility must be an [eligible site type](#) and meet applicable requirements.





Support & Resources – Eligible Site Types

NHSC Eligible Site Types

- Federally Qualified Health Centers
 - Community Health Center
 - Migrant Health
 - Homeless Program
 - Public Housing Program
 - School-Based Program
 - Mobile Clinic
- FQHC Look-Alikes
- Indian Health Service Facilities
- Certified Rural Health Clinics
- Correctional or Detention Facilities (Federal/State/Immigration and Customs Enforcement)
- Critical Access Hospitals
- Community Mental Health Centers
- State or Local Health Departments
- Community Outpatient Facilities
 - Hospital Affiliated
 - Non-Hospital Affiliated
- Private Practices (Solo & Group Practice)
- School-Based Clinics
- Mobile Clinics
- Free Clinics
- Substance Use Disorder Treatment Facilities



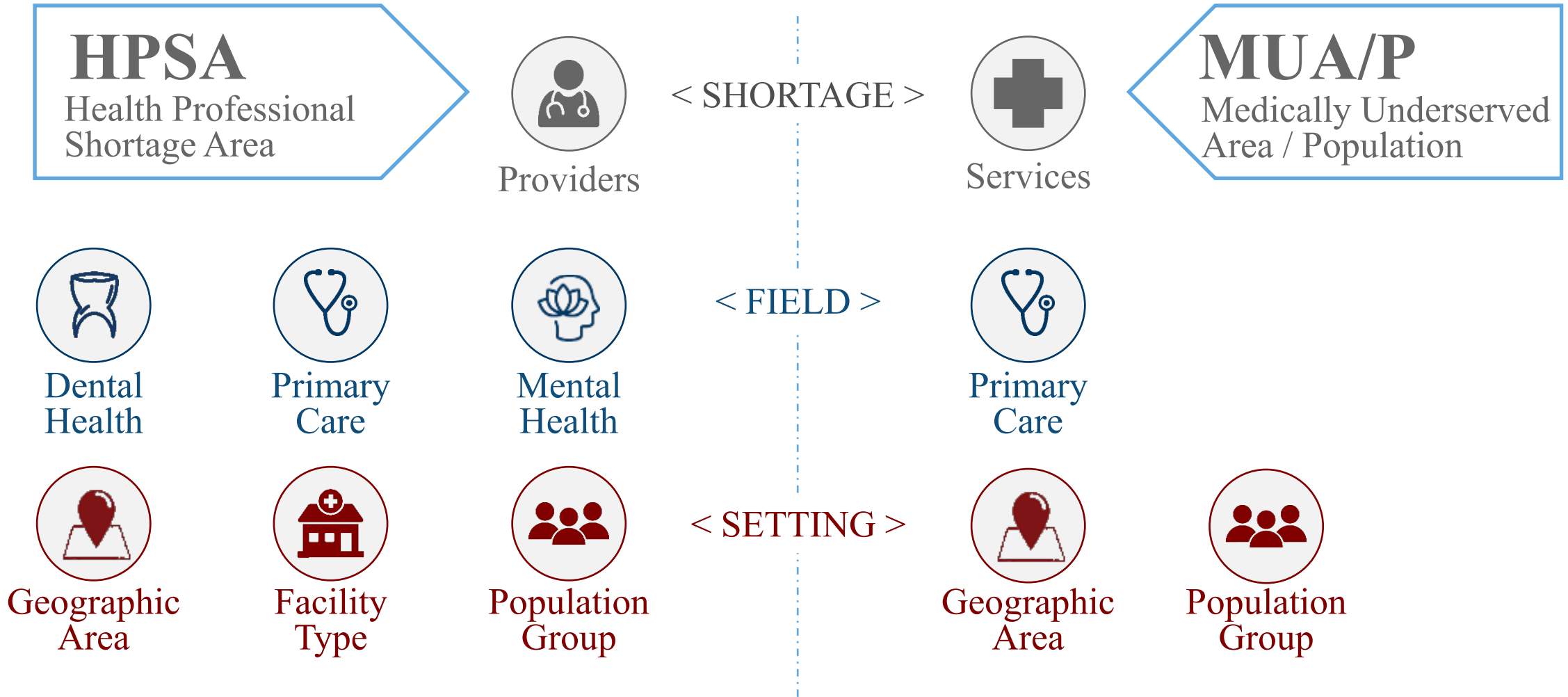
Support & Resources – Approved SUD Treatment Facilities

NHSC-Approved Substance Use Disorder (SUD) Eligible Treatment Facilities

To be an NHSC-approved SUD treatment facility, sites must have demonstrated that they meet the requirements set forth in the NHSC Site Agreement and NHSC Site Reference Guide, including submission of SUD documentation.

- SAMHSA-certified opioid treatment programs (OTPs)
- Office-based opioid treatment facilities (OBOTs)
- Non-opioid substance use disorder treatment facilities (SUD treatment facilities)
- Federally Qualified Health Care Centers (FQHCs)
- Rural Health Clinics (RHCs)
- American Indian Health facilities
- FQHC Look-Alikes
- State or federal correctional facilities
- Critical Access Hospitals
- Community health centers
- State or local health departments
- Community outpatient facilities
- Private practices
- School-based clinics
- Mobile units and free clinics

Shortage Areas



New Site Cycle – Opens April 27 – June 22, 2023

Apply to be a NHSC-Approved Sites

- Eligible for clinicians to apply for Loan Repayment programs.
- Potentially eligible for Scholarship and Student-to-Service placements.
- Website: <https://nhsc.hrsa.gov/sites/how-to-apply>
- BHW State Leads: <https://nhsc.hrsa.gov/sites/contacts/regional-offices-state-contacts>



Health Workforce Connector



45,000+
Sites



5,900+
Opportunities



Virtual
Job Fairs

**Career and training
opportunities**

Customized profiles

Powerful filters

**For NHSC and Nurse
Corps health care
facilities**

Support & Resources – Health Workforce Connector: Job Seekers

Health Workforce Connector (HWC)

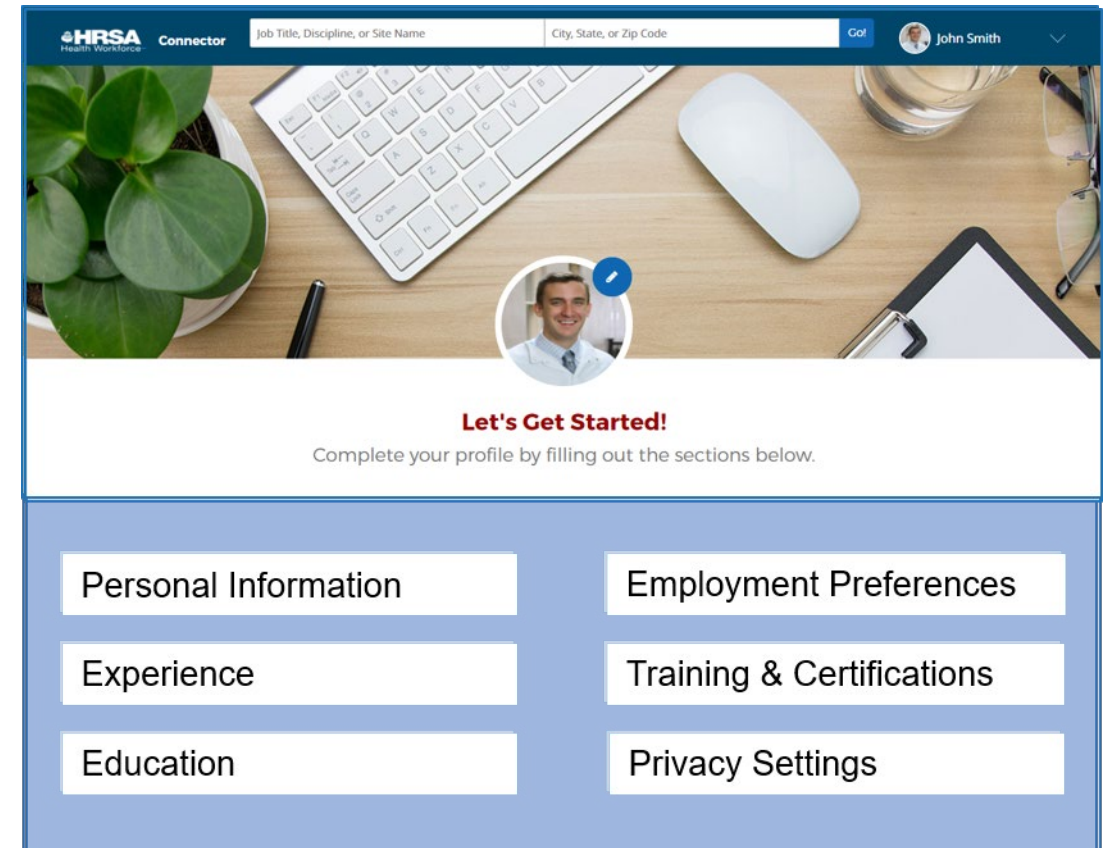
- View job vacancies at thousands of NHSC- and Nurse Corps-approved sites nationwide.
- Google Maps technology allows users to view the surrounding community (e.g., schools, restaurants, parks, places of worship, shops)
- Narrow your job search by:
 - Field of Practice
 - Specialty
 - HPSA Score
 - Site Name
 - Zip Code
 - Sites with Open Positions



Support & Resources – Job Seeker Profiles

Health Workforce Connector (HWC) Profiles

- Health Workforce Connector provides a free service for primary medical, dental and behavioral health job seekers to: upload a resume or CV, credential documents, personal information and search for jobs in underserved areas throughout the nation.
- Verified recruiters and site administrators can search for potential candidates from a database of job seeker profiles, including NHSC and Nurse Corps participants.

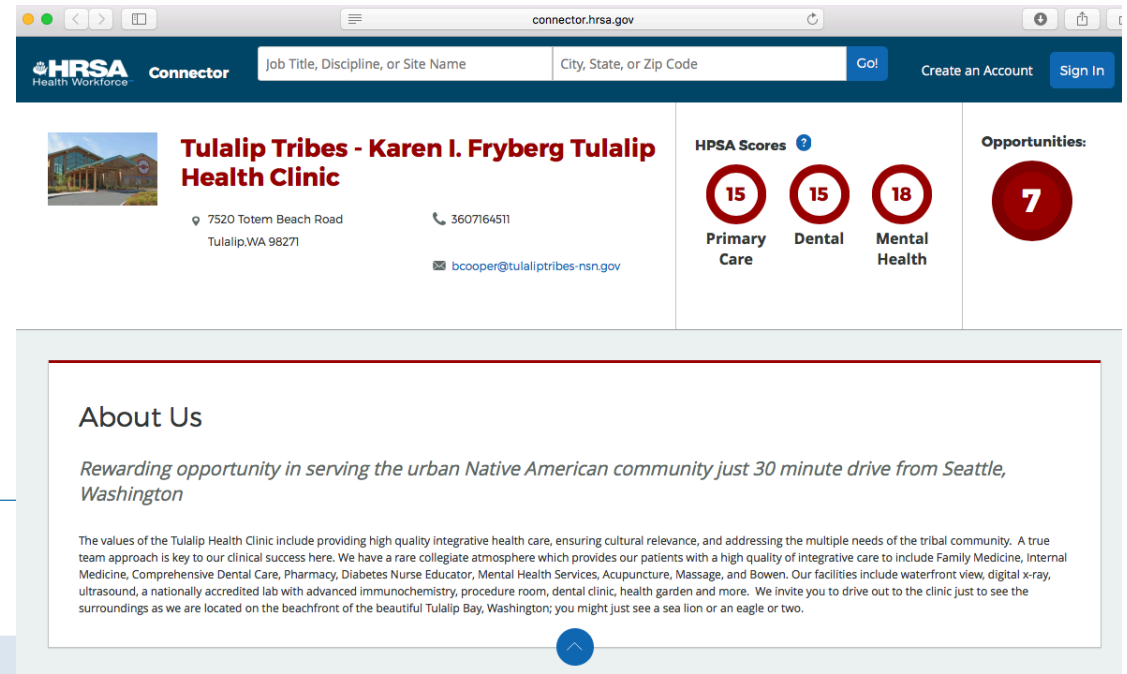


Health Workforce Connector Site Profiles

NHSC- and Nurse Corps-approved sites can create a profile and post job vacancies, visible to thousands of health care professionals who are actively seeking employment in underserved communities.

Create a site profile highlighting:

- Job Opportunities
- Services Provided
- Employee Benefits.
- Site Characteristics
- Local Community (schools, attractions, etc.)
- Photos
- Relevant Links & Websites



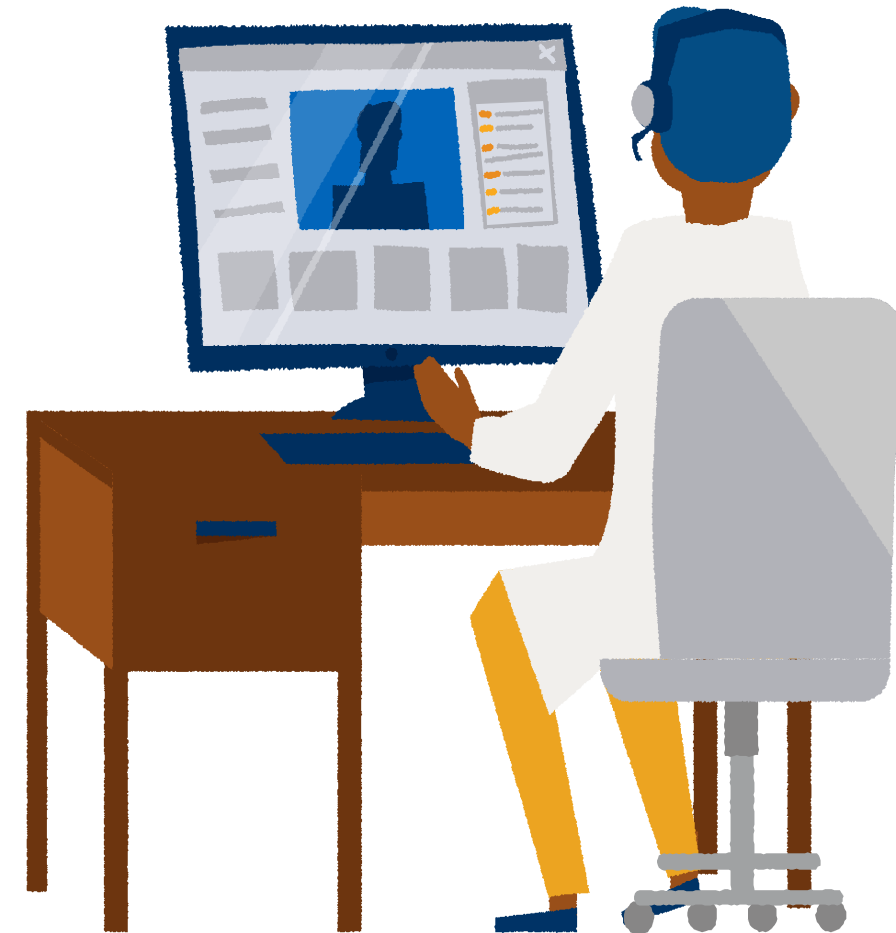
Support & Resources – Virtual Job Fair Benefits

What Is A Virtual Job Fair?

Virtual Job Fairs offer an innovative way for NHSC- and Nurse Corps-approved sites to promote job opportunities to a targeted audience of primary care clinicians who are interested in serving communities with limited access to health care

Benefits:

- Sites advertise to a wider audience
- Connections are made virtually with no travel costs
- Clinicians connect with sites in targeted areas where they are looking to work
- Clinicians explore jobs at sites they may not have been aware of for consideration
- Both job-seekers and sites are provided technical assistance on using the Health Workforce Connector



Support & Resources – Virtual Job Fair Event

What Happens In A Virtual Job Fair?

- Using Zoom Events, sites are assigned a booth in our virtual expo floor where attendees can move freely, network via one-on-one chat, and join other participants in expo booths for conversation.
- Sites are provided a 30-minute timeslot where job seekers can join site representatives in their virtual booth to learn more about the site, local community and population served, position(s) available, practice models, salary, benefits, and more.
- 3 to 3 ½ hours long and can accommodate up to 30 sites





Support & Resources – Share Your Service

#ShareYourService

NHSC clinicians, alumni and sites:

- Visit and tag the [NHSC Facebook Page](#) or [@NHSCorps](#) on Twitter.
- Post a video or photo to Facebook, Twitter or Instagram celebrating their commitment to serving in underserved communities
- Connect with and check out posts from other NHSC members

[#ShareYourService](#)

[Share Your Service link](#)

FOLLOW US:



Support & Resources – Share Your Service Video

#ShareYourService Video

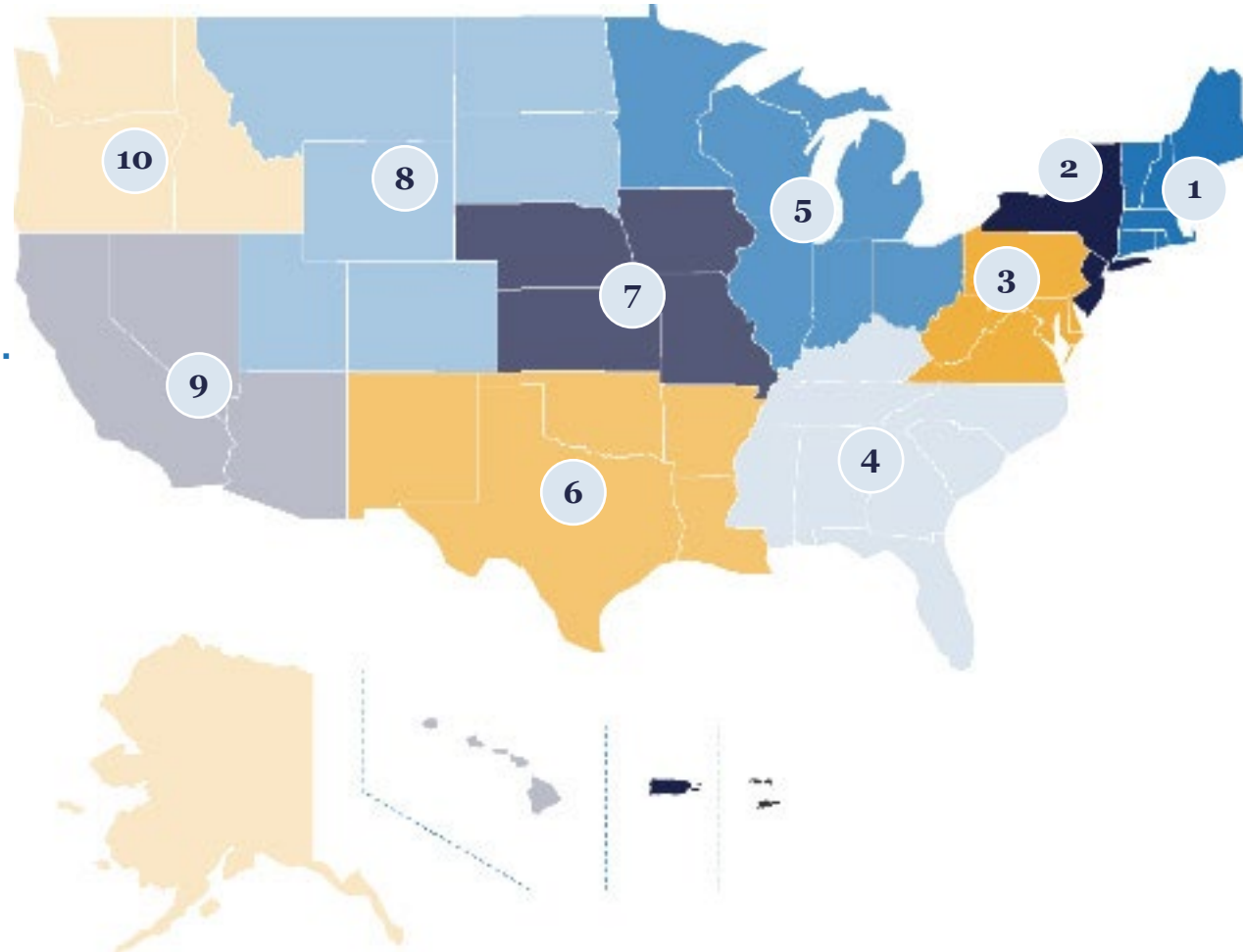


[Click to view video on YouTube](#)

Support & Resources – DRO Regional Offices

Support for Providers

- Support for you in your region
- Dedicated BHW staff located in 10 regional offices provide dedicated contacts for your area.
- Find your contact on the NHSC website



Regions

- 1** Boston
- 2** New York
- 3** Philadelphia
- 4** Atlanta
- 5** Chicago
- 6** Dallas
- 7** Kansas City
- 8** Denver
- 9** San Francisco
- 10** Seattle

Questions





Support & Resources – Contact Us

- **Clark Conover, MHA - Supervisor**
- Division of Regional Operations – Kansas City
- Bureau of Health Workforce (BHW)
- Health Resources and Services Administration (HRSA)
- Phone: 1-800-221-9393 (Customer Care Center); M-F, 8 a.m. to 8 p.m. ET, except federal holidays

Web <http://nhsc.hrsa.gov>

Virtual Job Fair: <http://jobfair.hrsa.gov>

Health Workforce Connector: <http://connector.hrsa.gov/>

 Facebook: <http://facebook.com/nationalhealthservicecorps>

 Twitter: <http://twitter.com/NHSCorps>

 LinkedIn: <http://www.linkedin.com/company/national-health-service-corps>



Connect with HRSA

Learn more about our agency at:

www.HRSA.gov



Sign up for the HRSA eNews

FOLLOW US:



Questions or Comments



ruralcenter.org

Contact Information

Bethany Adams	Program Director	(859) 806-2940	badams@ruralcenter.org
Sally Buck	Chief Executive Officer	(218) 216-7025	sbuck@ruralcenter.org
Latrael Courtney	Clinic Consultation Program Specialist	(218) 216-7039	lcourtney@ruralcenter.org
Jamie Goodpaster	Community Program Specialist	(218) 461-1299	jgoodpaster@ruralcenter.org
Terry Hill	Senior Advisor Rural Health Leadership and Policy	(218) 216-7032	thill@ruralcenter.org
Shannon Jorgenson	Contract Specialist	(218) 216-7014	sjorgenson@ruralcenter.org
Ambresha Johnson	Community Program Specialist	(218) 216-7024	ajohnson@ruralcenter.org
Caleb Lozinski	Telehealth and Outreach Coordinator	(218) 216-7017	clozinski@ruralcenter.org
Kaarin Lund	Community Program Specialist	(218) 216-7015	klund@ruralcenter.org
Kim Mayo	Telehealth & Outreach Program Manager	(218) 216-7018	kmayo@ruralcenter.org
Selena McCord	Community Program Manager	(218) 216-7011	smccord@ruralcenter.org
Nick McRae	Consultation Program Specialist	(218) 216-7044	nmcrae@ruralcenter.org
Alyssa Meller	Chief Operating Officer	(218) 216-7040	ameller@ruralcenter.org
Robbie Nadeau	Program Coordinator	(218) 216-7021	rnadeau-emison@ruralcenter.org
Lauren Prnjat	Program Analyst & Evaluation Specialist	(218) 216-7024	lprnjat@ruralcenter.org
Mike Rowland	Telehealth & Outreach Program Specialist	(218) 216-7020	mrowland@ruralcenter.org
Shannon Saari	Consultation Program Manager	(218) 216-7016	ssaari@ruralcenter.org
Beka Stanfield	Community Program Coordinator	(218) 461-1263	bstanfield@ruralcenter.org
Tabitha Stone	Consultation Program Coordinator	(218) 461-1250	tstone@ruralcenter.org
Denise Tackett	Quality Consultation Program Specialist	(218) 216-7012	dtackett@ruralcenter.org
Kate Stenehjem	Operations Manager	(218) 216-7038	kstenehjem@ruralcenter.org

Contact Information:

The Center DRCHSD Team

(218) 727-9390

drchsd-program@ruralcenter.org

ruralcenter.org

