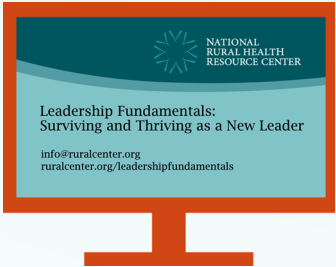




Leadership Fundamentals Video Series: Surviving and Thriving as a New Leader



This educational video series is designed to help new rural health leaders navigate the ups and downs of transitioning to a supervisor or manager role. Feel confident in your new role and build a cohesive team that delivers results.

Each module includes an educational video, discussion questions, resources, and suggested activities to support learning.

The Role of a Leader		Understand what it means to be a leader and look at some of the common challenges new leaders experience. Explore strategies for looking out for your own well-being as well as that of your team.
Building Organizational Awareness		Take a broad look at your health care organization and how you and your team contribute to its long-term success. Reflect on ways you impact culture and relationships through your daily interactions.
Managing Performance		Explore ways to influence the behavior of those on your team. Discover best practices for communicating expectations, giving and receiving feedback, and recognizing others.
Communication and Difficult Conversations		Learn ways to be a collaborative communicator. Explore ways to become a better listener, keep conflict constructive, and how to have difficult conversations.
Leading Change		Hear about common experiences that people have through the course of change. Learn specific things you can do to smooth the change process and help yourself and others through the transition.
Engaging Your Team		Learn strategies for strengthening engagement by developing your team’s knowledge and skills, making collaborative decisions, and building a strong team identity.