



CRITICAL ACCESS HOSPITALS AS NATIONAL HEALTH SERVICE CORPS SITES

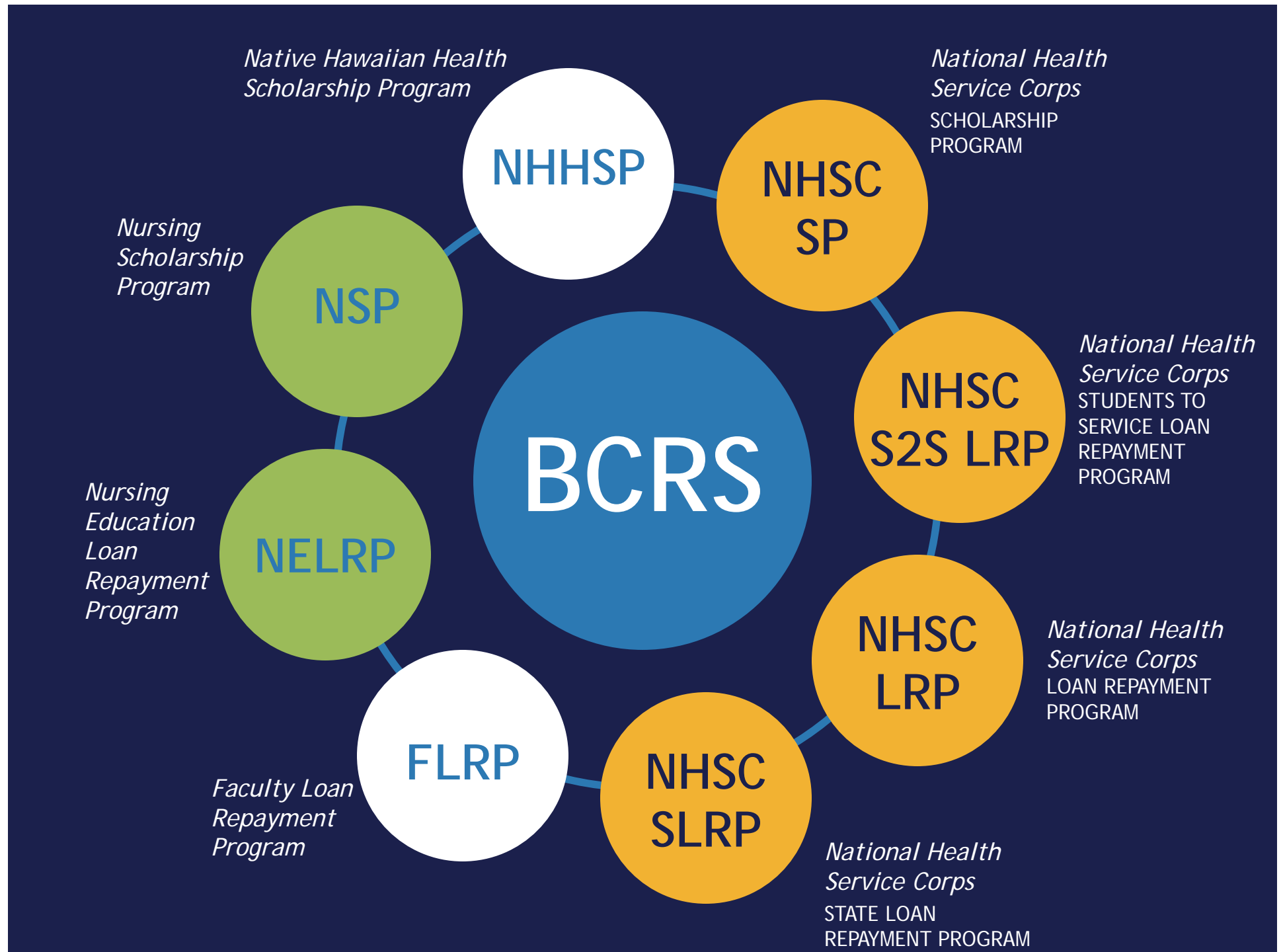
Lindsey Toohey
Deputy Director, Office of Policy and Program Development
Bureau of Clinician Recruitment and Service
ltoohey@hrsa.gov; July 10, 2012



AGENDA

- National Health Service Corps Overview
 - ❖ Scholarship Program
 - ❖ Students to Service Program
 - ❖ Loan Repayment Program
 - ❖ NHSC Sites
- Overview of NHSC Policy for Critical Access Hospitals
- CAH Pilot Program Participation To Date
- Site Requirements & Application Process
- CAH Site Application Tip List





THE NATIONAL HEALTH SERVICE CORPS (NHSC)

- Builds healthy communities by supporting qualified health care providers dedicated to working in areas of the United States with limited access to care.
- Provides financial support to providers in the form of loan repayment and scholarship in exchange for working at NHSC-approved sites.
- As of the end of FY 2011, more than 10,000 providers and 14,000 sites.



**YEARS OF
SUPPORT**

=

**YEARS OF
SERVICE**

Scholars commit to serve in the Corps upon completion of their training — one year for each year of support (at least 2 years).





NEW!

STUDENT TO SERVICE LOAN REPAYMENT PROGRAM (S2S LRP) PILOT

- Program Requirements/Eligibility
 - ❖ Physicians in 4th Year of Training
 - ❖ Must Match to Primary Care Residency
 - ❖ Placement in a HPSA of 14 or Higher
 - ❖ Placement Assistance Provided
 - ❖ \$120,000 for a 3 Year Commitment
- 77 Awards Made in First Year



STATE LOAN REPAYMENT PROGRAM

- 2012 New Competition
 - ❖ Closed June 5; 8 Applications Received
- Program Expansion
 - ❖ Disciplines now include Registered Nurses and Pharmacists
 - ❖ Site types now include Critical Access Hospitals
- Matching Requirement - Alternative Funding Sources



NHSC LOAN REPAYMENT PROGRAM



The full-time program offers up to \$60,000* in tax-free loan repayment for 2 YEARS of service, and up to \$170,000* for a 5-YEAR service commitment.

** Amounts may change; see Application and Program Guidance for each application cycle.*



PROVIDERS RECEIVE LOAN REPAYMENT IN ADDITION TO A COMPETITIVE SALARY FROM THEIR EMPLOYERS: NHSC-APPROVED SITES



RECRUITING CLINICIANS: THE *NEW* NHSC JOBS CENTER

NATIONAL HEALTH
SERVICE
CORPS

NHSC JOBS CENTER

Search thousands of jobs to serve those who need you most.

Washington, DC

GO!

Customize Your Search

My field of practice is *i*

Primary Care

☒ Only show sites with open positions

Position discipline

Physician, MD/DO

Position specialty

Family Practice

Only show sites with a HPSA score of

0 - 26 *i*

0

26

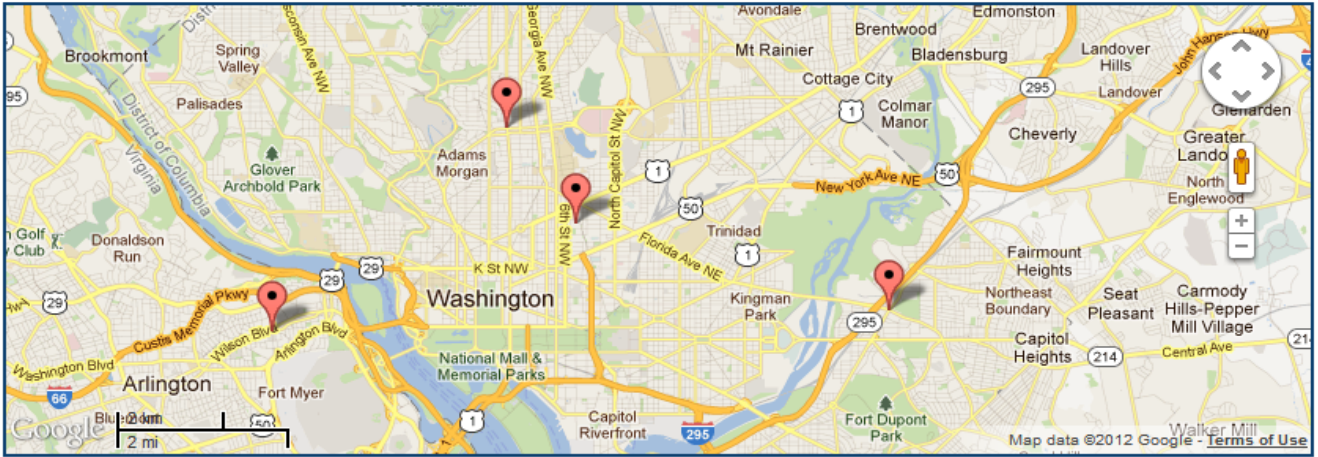
Site Name

☐ Only show sites within

20

miles of

Washington, DC



Hide Map

Location x

HPSA Type x

Open Positions x

Discipline x

Specialty x

Sort By

Name

Descending

Showing 1 to 4 of 4 with 25 per page

1

Site Name and Address	Open Positions	HPSA Score
Walker-Jones health Center 40 Patterson Street, NW Washington, DC 20001	Total: 1 Matching Search: 1	Primary Care: 21 Mental: 18 Dental: 19
UPPER CARDOZO HEALTH CENTER 3020 14th St NW Washington, DC 20009-6865	Total: 4 Matching Search: 2	Primary Care: 21 Mental: 18 Dental: 19
Northwest Family Health Center 1515 N. Courthouse Road Arlington, VA 22201	Total: 3 Matching Search: 1	Primary Care: 14 Mental: N/A Dental: N/A

SITE INFORMATION



NHSC JOBS CENTER

Search thousands of jobs to serve those who need you most.

Northwest Family Health Center

<http://nwhealth.com> | (134) 123-4213



[About this Site](#)

[Site Information](#)

[Open Positions](#)

[Affiliated Sites](#)

[Map & Community](#)

SITE INFORMATION

HPSA Information

Number of Patients Served Annually
235

Facility Size

Our facility contains 12 examination rooms, a fully equipped laboratory for on site and quick turnaround testing, and a large waiting area for families.

Languages Spoken By Patients

- Chinese (Mandarin, Cantonese, etc.)
- Spanish
- English
- Japanese
- French/Creole

Other Benefits Provided

- Research
- Teaching
- Mentoring
- CMEs/CEUs
- 401K

Services Provided

- Pharmacy
- Family Medicine
- Internal Medicine
- Women's Health
- Oral Health
- OB/GYN
- Geriatrics

Specialty Services Provided

- HIV/AIDs
- Pain Management
- Pulmonary Health
- Migrant Health Care
- Diabetes

Share



COMMUNITY FEATURES



NHSC JOBS CENTER

Search thousands of jobs to serve those who need you most.

Northwest Family Health Center

<http://nwhealth.com> | (134) 123-4213

[About this Site](#)

[Site Information](#)

[Open Positions](#)

[Affiliated Sites](#)

[Map & Community](#)

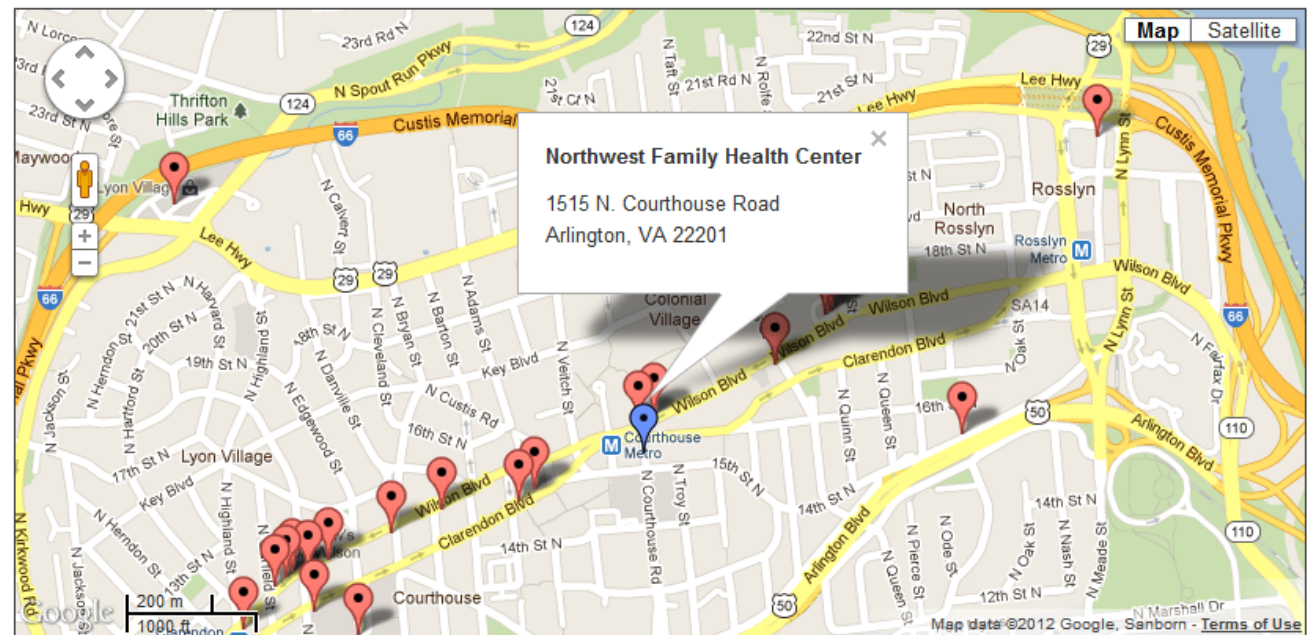


This site is located at:
1515 N. Courthouse Road
Arlington, VA 22201.

See nearby

or search for

[Re-center on Site](#)



Share



NHSC VIRTUAL JOB FAIR PILOT

- NHSC piloted Virtual Job Fair to help unemployed clinicians in February 2012
 - ❖ 20 Sites were invited; 85 NHSC participants
 - ❖ Within 24 hours, 20% of the participating sites indicated they had been contacted by job seekers
 - ❖ 1 confirmed hire as a result of the fair
- NHSC hosting rural Virtual Job Fair
 - ❖ Working with the Office of Rural Health Policy
 - ❖ June 27, 2012



CAH SITE POLICY UNDER 3-YEAR PILOT

- NHSC will approve entire CAH as a service site.
 - ❖ Including the ER, swing bed unit, skilled nursing facility (SNF)
- Clinicians' time in the inpatient setting will now count towards service obligation.
 - ❖ In general, up to 24 hours of the minimum 40 hours of full-time practice
 - ❖ 12 hours in the case of half-time practice
- NHSC counts hours on a weekly basis
 - ❖ Clinicians that spend "a week on, a week off" of inpatient coverage would not be eligible



CAH PILOT PARTICIPATION*

- 109 CAHs are currently participating in the NHSC.
 - ❖ 70 have been approved since the CAH pilot began in October
 - ❖ 39 have been converted during the site recertification process
 - ❖ 75 additional applications are in the review process
- 15 NHSC participants are already working in a CAH.
- 34 LRP applicants indicated they were working at a CAH (cycle closed May 15).
 - ❖ 15 were identified as being located in a high-need HPSA

*Data as of June 1, 2012



NHSC SITE ELIGIBILITY

- Be located in a designated Health Professional Shortage Area (HPSA).
 - ❖ Call State Primary Care Office for assistance getting a HPSA designation
- Demonstrate an affiliation with an outpatient, ambulatory care clinic.
 - ❖ Can be through ownership or other arrangement
- Provide comprehensive primary care and related inpatient service.
- Documented sound fiscal management.
- Have capacity to maintain a competitive salary, benefits, and malpractice coverage package for providers.



NHSC SITE ELIGIBILITY (CONT.)

- See all patients, regardless of ability to pay.
- Accept Medicare, Medicaid & Children's Health Insurance Program beneficiaries.
- Utilize a sliding fee scale or a "charity care" policy for low-income patients.
 - ❖ Must have a financial assistance plan in place for those below 200% of poverty (without regard for assets)
 - Services at no charge, or a nominal charge, for those below 100% of poverty
 - Schedule of discounts for those between 100% and 200% of poverty
 - ❖ The NHSC can provide you with examples



RECRUITING NHSC PROVIDERS

- May only recruit the following disciplines under pilot program:
 - ❖ Physicians (MD or DO)
 - ❖ Physician Assistants
 - ❖ Nurse Practitioners
 - ❖ Certified Nurse Midwives
- Specialties include: family medicine, general internal medicine, obstetrics/gynecology, pediatrics, geriatrics, psychiatry, mental and behavioral health, and women's health.
- Allowed maximum of 10 NHSC providers over 3-year pilot period.



NHSC SITE APPLICATION PROCESS

- Applicant submits a site application online.
 - ❖ Visit www.nhsc.hrsa.gov/communities and review the Service Site Guide
 - ❖ Determine if you are in a HPSA
 - ❖ Go to the “Apply” tab on the web site to begin the online application
- Primary Care Offices (PCOs) review applications and make a recommendation.
- BCRS Regional Offices review & make final determination.
 - ❖ Utilize DRO staff to answer any specific questions you have on the application process and required documentation



CAH SITE APPLICATION TIP LIST

- The hospital must be in either a geographic or population HPSA appropriate for the disciplines they are recruiting.
 - ❖ CAHs may not use the “automatic” facility HPSA designation that an affiliated Rural Health Clinic has been assigned
- If your affiliated outpatient clinic isn’t an approved NHSC site, it must also apply to the NHSC. Apply for both at the same time.
 - ❖ Upload a document indicating which clinics are affiliated with the hospital
- Understand your sliding fee scale/charity care policy.
 - ❖ A charity care policy may be limited to certain areas of the hospital operation, but must cover all areas where NHSC participant would serve
 - ❖ County facilities may limit the discounts to residents, so long as it covers the entire HPSA
- For scholar placement, both the CAH and the affiliated outpatient site must be in a HPSA of 16 or higher (for FY 2013 cycle).
- Read the NHSC Site Guide & the Loan Repayment Guidance.
 - ❖ Become familiar with program requirements, especially related to practice location and hourly requirements



CONTACT INFORMATION



Name: Lindsey Toohey

E-mail Address: Ltoohey@hrsa.gov