



NATIONAL  
RURAL HEALTH  
RESOURCE CENTER

## Delta Region Community Health Systems Development Program

# Community Paramedicine Framework & Opportunity

January 19, 2023

# The Center's Purpose

The [National Rural Health Resource Center \(The Center\)](#) is a nonprofit organization dedicated to sustaining and improving health care in rural communities. As the nation's leading technical assistance and knowledge center in rural health, The Center focuses on five core areas:

- Transition to Value and Population Health
- Collaboration and Partnership
- Performance Improvement
- Health Information Technology
- Workforce



# Diversity, Equity, Inclusion, & Anti-racism



## **Building a culture where difference is valued.**

The Center is committed to DEI and anti-racism. We create an environment that reflects the communities we live in and serve; a place where everyone feels accepted and empowered to be their full, authentic selves; and where everyone belongs.

We understand the impact of and seek to defeat racism and discrimination in ourselves, our workplace, and the world. This guides how we cultivate leaders, build our programs and resources, and deliver our technical assistance.

We are an organization that honors, celebrates, and respects all dimensions of diversity. These principles are central to our mission and to our impact.

[Read more at ruralcenter.org/DEI](https://ruralcenter.org/DEI)



NATIONAL  
RURAL HEALTH  
RESOURCE CENTER

# Delta Region Community Health Systems Development (DRCHSD) Program Supported By:



## Delta Regional Authority

U.S. Department of Health & Human Services



# HRSA

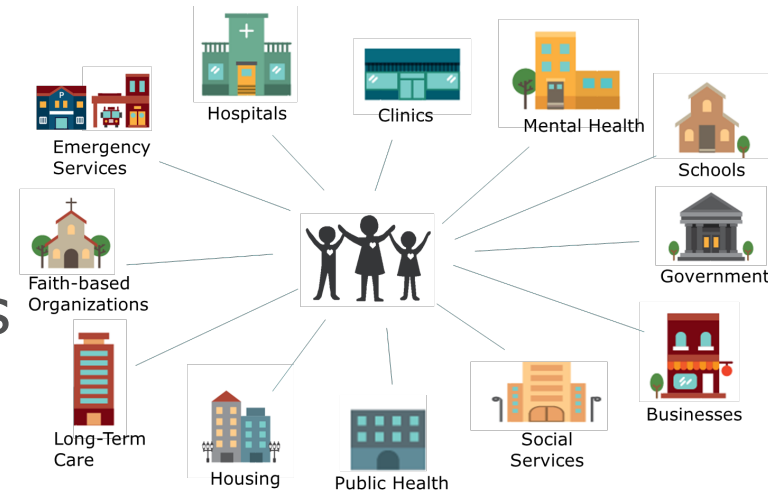
Federal Office of Rural Health Policy

*This project is supported by the Health Resources and Services Administration (HRSA) of the U.S. Department of Health and Human Services (HHS) as part of a financial assistance award totaling \$10,000,000 with 100% funded by HRSA/HHS and \$0 amount and 0% funded by non-government sources. The contents are those of the authors(s) and do not necessarily represent the official views of, nor an endorsement by HRSA/HHS, or the U.S. Government.*



# DRCHSD Program Purpose: Develop a Sustained Local System of Care

- Increase care coordination
- Improve quality of care and patient experience
- Build awareness of local services
- Reduce by-passing of local services
- Enhanced partnership and collaborative relationships
- Increase long-term viability of the organization
- Sustain a local system of care to prepare for population health



# Agenda

- Overview of Webinar 1
- The Center's CP Framework and Panel Discussion
- Application Process
- Next Steps
- Questions and Comments



# Community Paramedicine Panelists



Paul Miller – Division  
Chief of EMS  
Crawfordsville, IN, CP  
Program



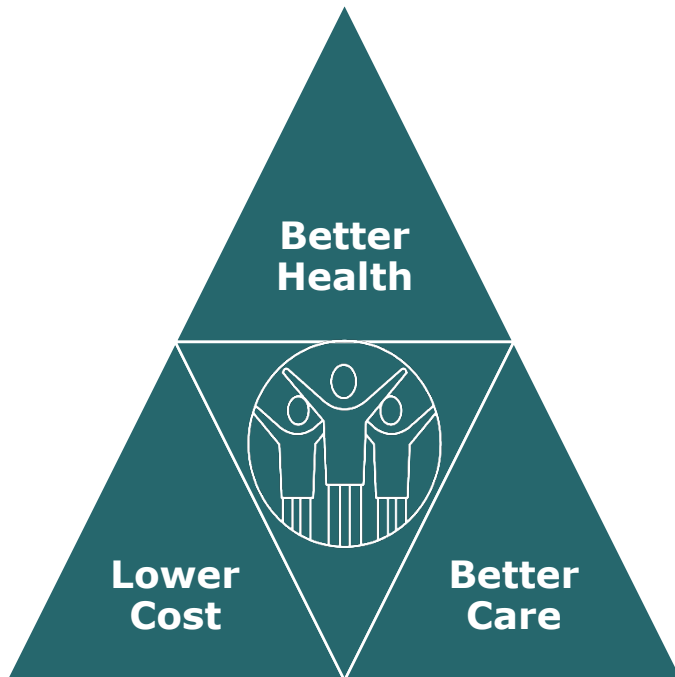
Richard Belle - Operations  
Director, Acadian Health,  
LA

# Overview of Webinar 1

## Triple Aim

## Healthcare 3.0

## EMS 3.0



- Patients over profit
- Value-based & outcome incentives
- Primary care valued
- Addressing root causes of health conditions
- Patients own health history and data
- Evidence-technology empowered
- Healthy living is rewarded

- Patient-centered 24/7 access to appropriate care
- Improve patient quality and satisfaction
- Impact population health outcomes
- Reduce cost
- Enhance patient acquisition of community resources

NAEMT. (2016). *The EMS Transformation- Moving to "EMS 3.0"*. NAEMT News. <http://www.naemt.org/docs/default-source/2017-publication-docs/2016-spring-naemt-news---ems-transformation.pdf>





# Community Paramedicine Scope

Public Health Education,  
Case Management  
Provider Referrals to  
Primary Care and Ancillary  
Community Health Services



Non-Emergent Medical  
Services; Wellness, Post-  
Discharge, Screening,  
Immunizations, Diagnostics  
Medication Reconciliation



Assess Additional SDOH  
Needs, Safety Risk,  
Substance Abuse,  
Behavioral and Mental  
Health Services



Improve ED Utilization,  
Chronic Care Management,  
Remote Patient Monitoring  
Home Health, Hospice and  
Emergency Management  
Efforts



# The Center CP Program - Framework



# Feasibility Assessment

Start with a  
Feasibility  
Assessment



In-depth analysis to understand the foundation of a sustainable program:

- Federal
- State and/or regional
- Payment models
- Market analysis
- Population health needs



# Target Population & Care Coordination Model

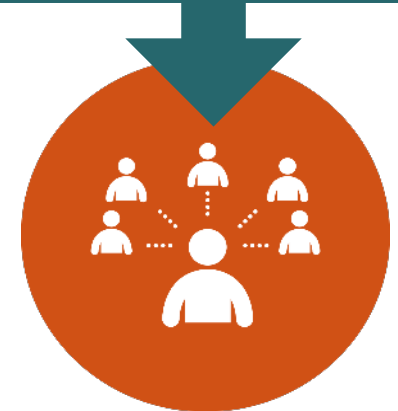
## Identify an Intended Population



Improving the care, health and reducing costs for a specific group of people

- Clearly define the goal or outcome
- Be specific
- Must be measurable
- Policies and procedures

## Care Coordination Model



# Workforce

## Workforce Needs Analysis



- Leadership development and support
- Community paramedic licensure and scope of practice
- Medical oversight
- Administrative reporting and operational requirements
- Recruitment and educational pipeline



# Communications & Technology

## Communications



Assess and leverage existing communication and health information, technology systems

- Broadband access
- Interoperability between systems
- Remote patient monitoring
- Telehealth

## Technology



# Business & Sustainability Plan

## Business and Sustainability Plan



- Ensure continued support from all community stakeholders to ensure ongoing operational success
- Maximize reimbursement for long-term program sustainability
- Quantify savings and value for payors and other potential funders



# Evaluation



- Assess target population impact and outcomes
- Maximize ongoing reimbursement opportunities
- Ensure continuity of stakeholder communications & data capture
- Ongoing Evaluation
  - The Center CP Framework
  - Participating Health System



# The Center CP Program - Framework Cont.



# Application Process and Next Steps

- Call for applications using our existing ITA Process: <https://www.ruralcenter.org/drchsd/implementation-ta-request>
- Eligibility: past and current DRCHSD organizations
- Application Timeline: apply now through March 31, 2023
- Project Rollout: funding up to four communities with staggered approach



# DRCHSD Community Paramedicine Contact

**Kaarin Lund**

Senior Community Program  
Specialist

[klund@ruralcenter.org](mailto:klund@ruralcenter.org)

(218)-216-7015



NATIONAL  
RURAL HEALTH  
RESOURCE CENTER