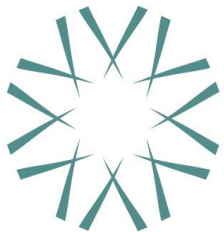


# Access to Health Care Through Telehealth



**Joe Wivoda**  
CIO & HIT Consultant  
October 6, 2016

Rural Health Innovations (RHI), LLC, is a subsidiary of the National Rural Health Resource Center (The Center), a non-profit organization. Together, RHI and The Center are the nation's leading technical assistance and knowledge centers in rural health. In partnership with The Center, RHI connects rural health organizations with innovations that enhance the health of rural communities.



NATIONAL  
RURAL HEALTH  
RESOURCE CENTER



# Overview

- Introduction to Telehealth
- Examples of how Telehealth is being used
- Challenges and solutions
- Introduce our two grantees who will be presenting

# Telehealth has been around for a while...

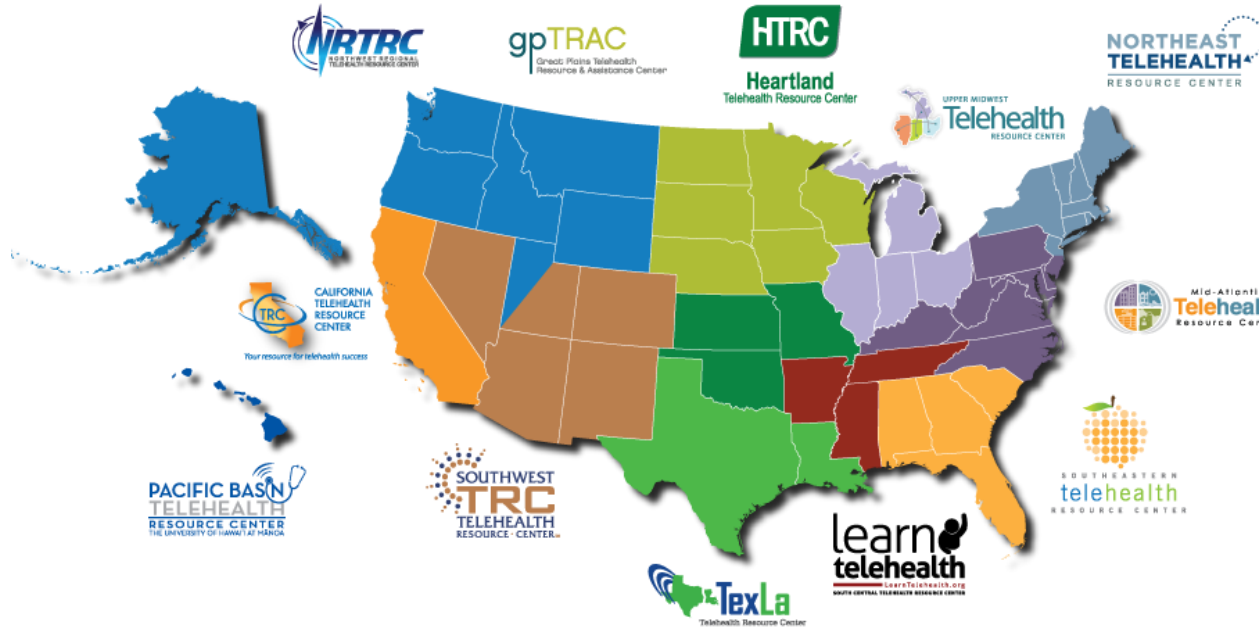


# Intro to Telehealth

- Very broad topic!
  - Home health monitoring
  - Inpatient ER/ICU/Etc
  - Behavioral health
  - Dermatology, cardiology, other “ologies”
  - Remote patient monitoring
- Strong evidence for efficacy, cost-savings, and customer satisfaction

# Telehealth Resource Centers

## TelehealthResourceCenters.org






2 National Resource Centers

NRTRC	gpTRAC	NETRC
CTRC	HTRC	UMTRC
SWTRC	SCTRC	MATRC
PBTRC	TexLa	SETRC

12 Regional Resource Centers

Downloaded from <http://www.telehealthresourcecenter.org/who-your-trc> on October 5, 2016

# American Telemedicine Association

- “The leading telehealth association”
- Industry research
  - “Georgia Partnership Uses Telemedicine and Centering Pregnancy Model to Significantly Decrease Preterm Labor Birth Rate in High Risk Areas”
  - “Increasing Medication Compliance in High Risk Patients by Utilizing Electronic Medication Dispensers”
- Educational content
- Practice guidelines
- Buyer’s guide
- Annual and regional conferences

# Challenges and Solutions

- Interstate licensure
  - Multi-state compacts are solving some of these
- Clinic workflow
  - Workflow and process redesign is very important
  - Consider end-to-end testing
- Reimbursement
  - Your TRC will be able to help
  - CMS telehealth information:  
<https://www.cms.gov/Outreach-and-Education/Medicare-Learning-Network-MLN/MLNProducts/downloads/TelehealthSrvcsfctshht.pdf>
- Technology
  - Not as significant a barrier really



# Joe Wivoda

CIO & HIT Consultant

(218) 727-9390 ext 230

[jwivoda@ruralcenter.org](mailto:jwivoda@ruralcenter.org)

Get to know us better:

<http://www.ruralcenter.org>

