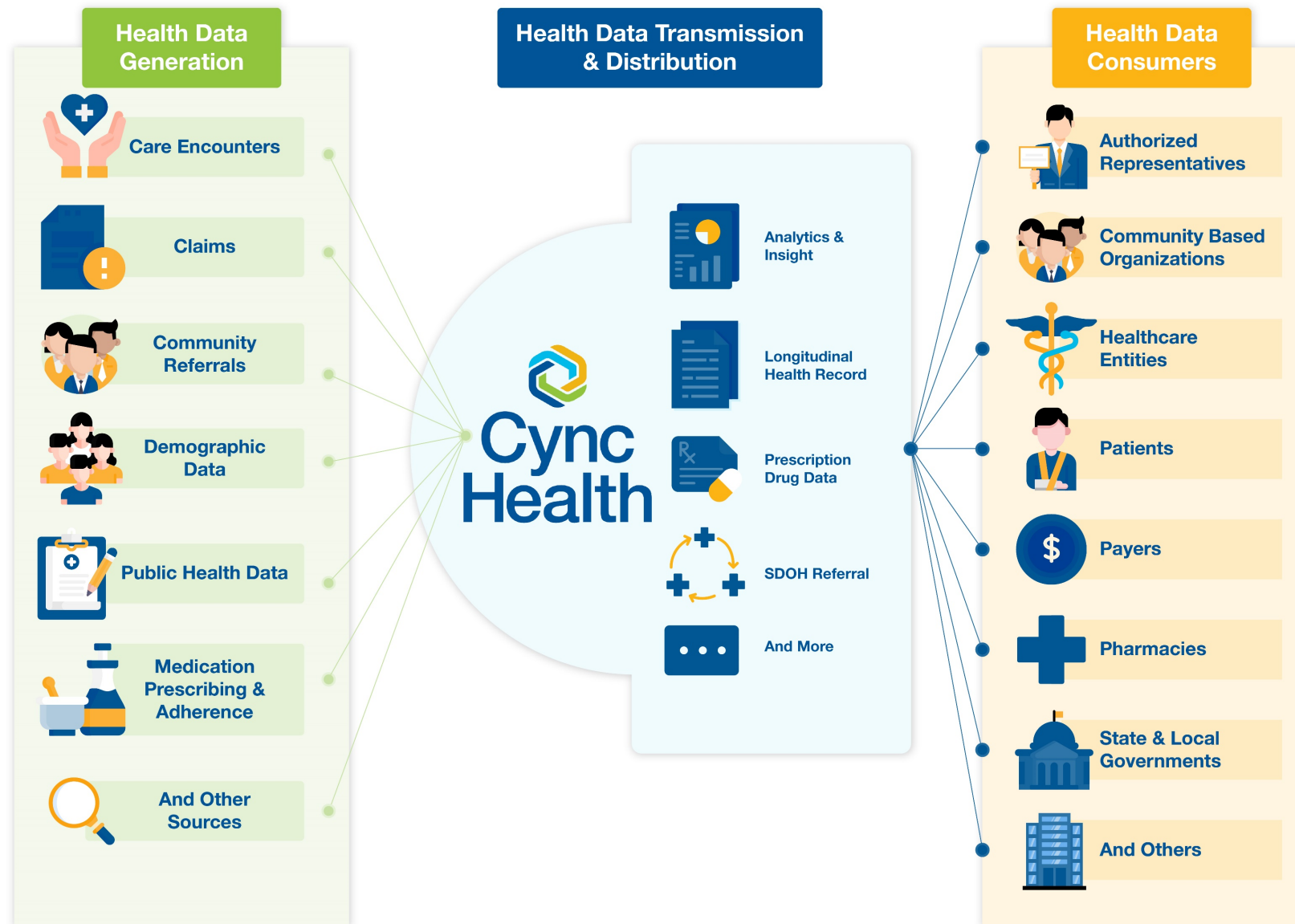




# Interoperability in Rural Hospitals & Clinics: Our Path to Health Data Utility

February 3<sup>rd</sup>, 2022



# Health Data Utility

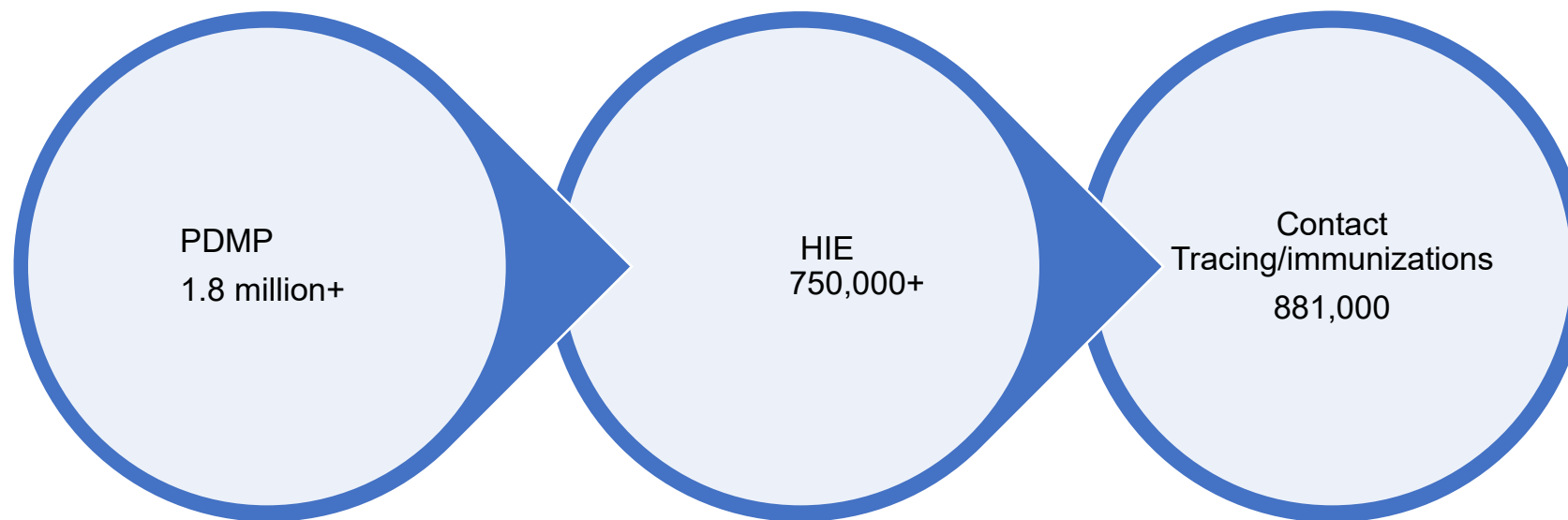
- We are an HIE but we also are an HDU
- CyncHealth and has undergone swift transformation in recent years.
- Health data utilities are responsive to the needs and desires of their customers and the communities they serve.
- Listening to the needs of clinicians, citizens, policy makers and other stakeholders, This includes adding event notifications, population health tools and creating a strong infrastructure that will support not only health uses cases but contribute for economic development to spurring innovation and implementing solutions that help keep data accessible, efficient and of high quality- sustainable interoperability infrastructure
- Nebraska and Iowa have the distinction of being served solely by a single designated entity.
  - Core to an HDU
    - Clinical: USCDI Data standards facilitating compliance with interoperability rules
    - Independent Labs
    - Social/Community Care
    - Pharmacy connectivity
    - Claims data

# Local Governance

- In addition to local governance, the common purposes of health data utility are to provide reliable, affordable, safe, not-for-profit public-private partnership.
- We are reinvesting back into the utility model, as well as into community programs, infrastructure and projects.
- What are the advantages of a public private partnership and state designated entity (health data utility)?
  - Partners have a voice in the technology, the governance and the decision making of the organization
    - Supporting MBQIP & many other Quality initiatives
    - Event Notifications
    - Integration of community EMS/Ambulance data
    - Integration of SNF data
  - It's affordable, scalable, efficient and repeatable
  - We help customers build use cases that are high value and improve health outcomes
  - We meet our partners where they are at in their interoperability journey
  - We're not for profit and serve only our designated areas
  - We reinvest in our infrastructure and the communities we serve
  - Trust and reliability is our focus

# Health Data Utility in Practice

Results returned in a monthly snapshot:





# Contact Info

Jaime Bland DNP, MBA, MS RN  
CEO & President  
CyncHealth  
CyncHealth Advisors  
Nebraska Healthcare Collaborative

[jbland@cynchealth.org](mailto:jbland@cynchealth.org)