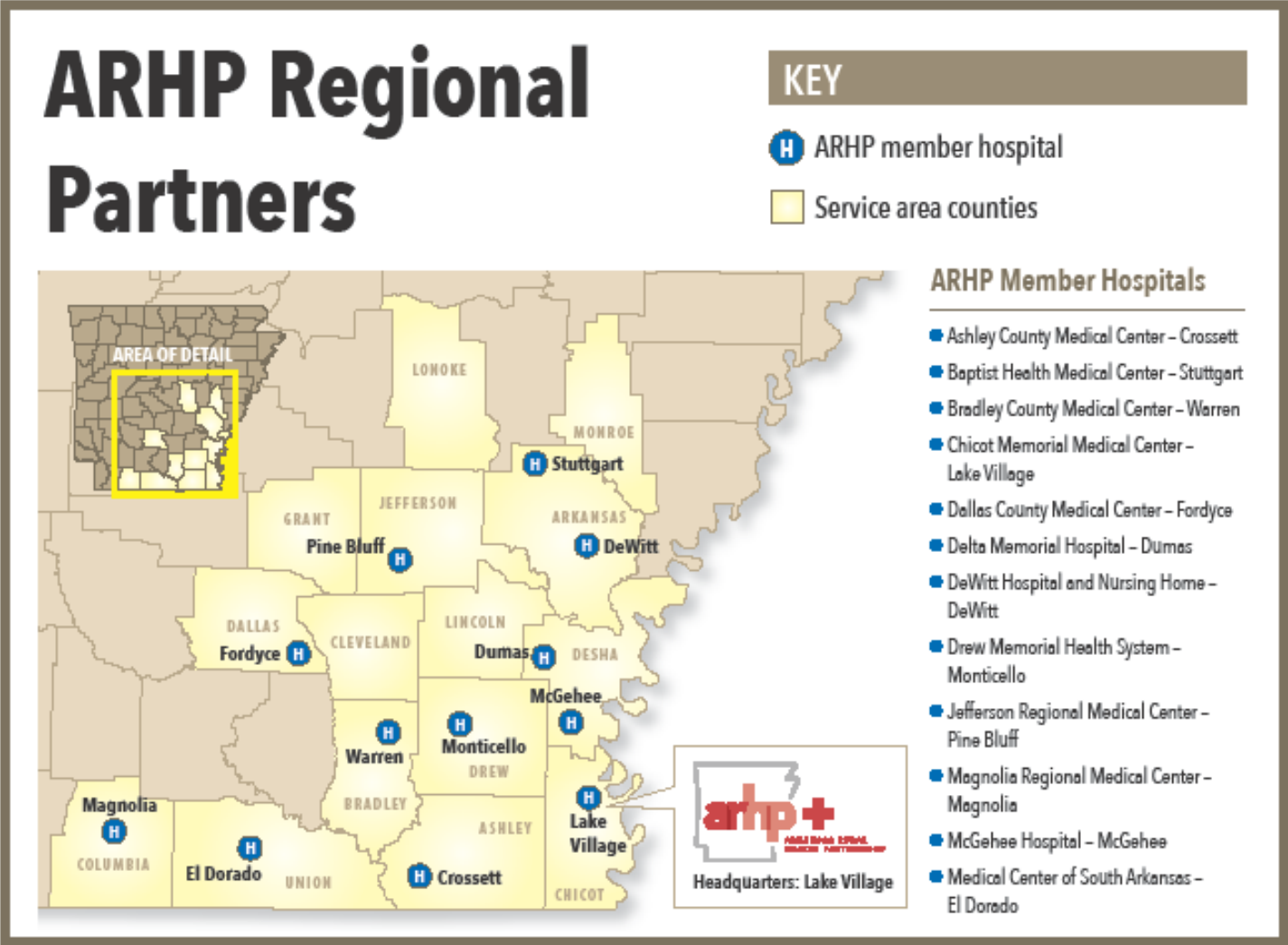


Unifying care, Transforming communities








ARKANSAS RURAL HEALTH PARTNERSHIP



ARHP Regional Quality Improvement Collaborative Grant

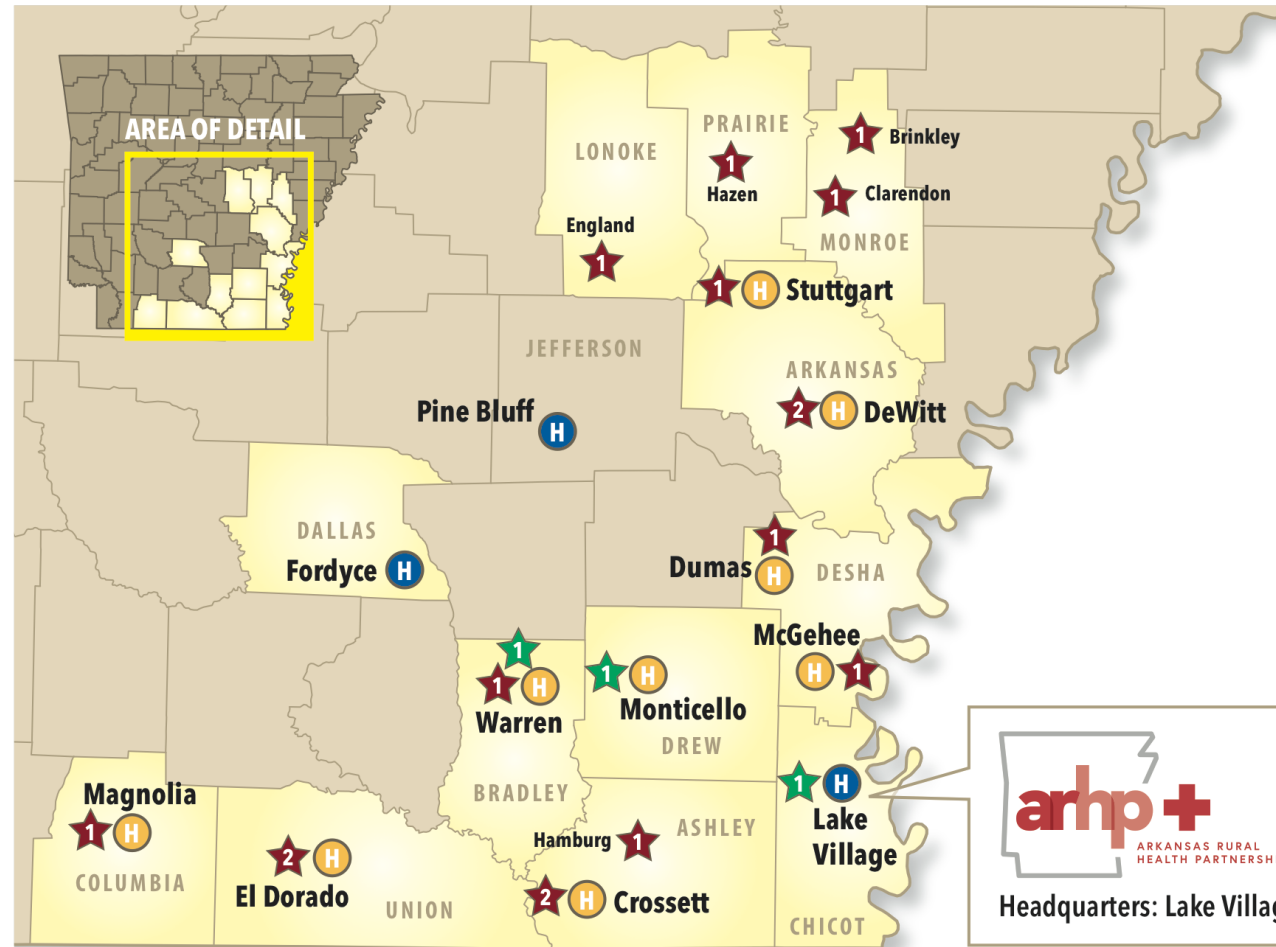
KEY

-  ARHP member hospital with clinics participating in project
-  ARHP member hospital serving in consortia member capacity only
-  QI Grant service area counties

-  Participating clinics (*Number indicates clinics in city if more than one*)
-  Participating clinic not affiliated with a hospital member (*Number indicates clinics in city if more than one*)

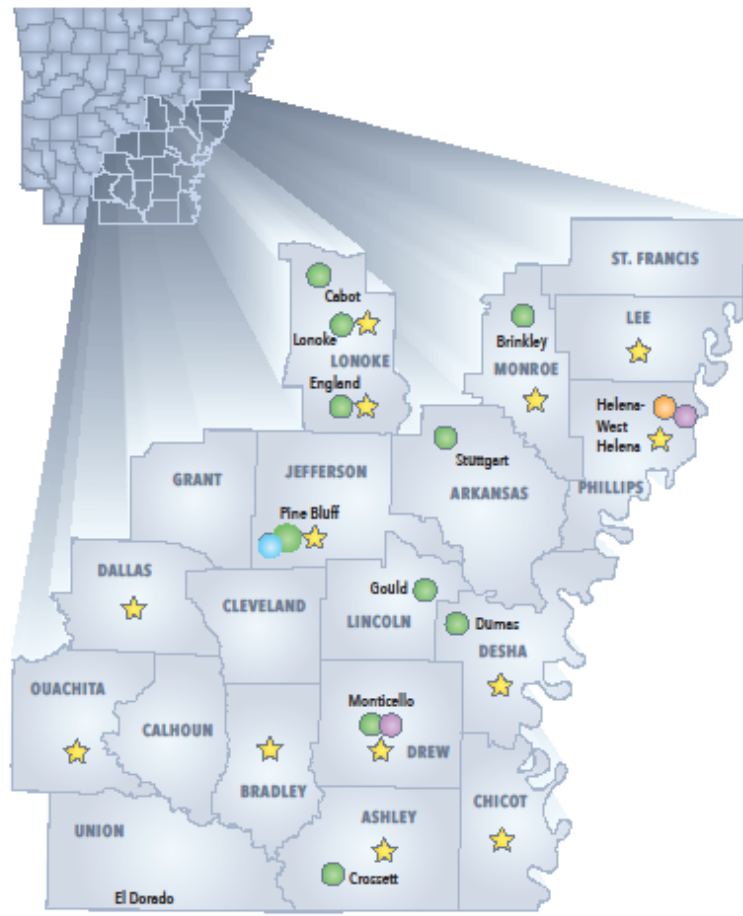
ARHP Member Hospitals

-  Ashley County Medical Center – Crossett
-  Baptist Health Medical Center – Stuttgart
-  Bradley County Medical Center – Warren
-  Chicot Memorial Medical Center – Lake Village
-  CrossRidge Community Hospital – Wynne
-  Dallas County Medical Center – Fordyce
-  Delta Memorial Hospital – Dumas
-  DeWitt Hospital and Nursing Home – DeWitt
-  Drew Memorial Health System – Monticello
-  Helena Regional Medical Center – Helena
-  Jefferson Regional Medical Center – Pine Bluff
-  Magnolia Regional Medical Center – Magnolia
-  McGehee Hospital – McGehee
-  Ouachita Regional Medical Center – Camden
-  Medical Center of South Arkansas – El Dorado



Give healthcare providers/clinics the tools to succeed and provide quality care at home

HRSA Delta States Diabetes Programs

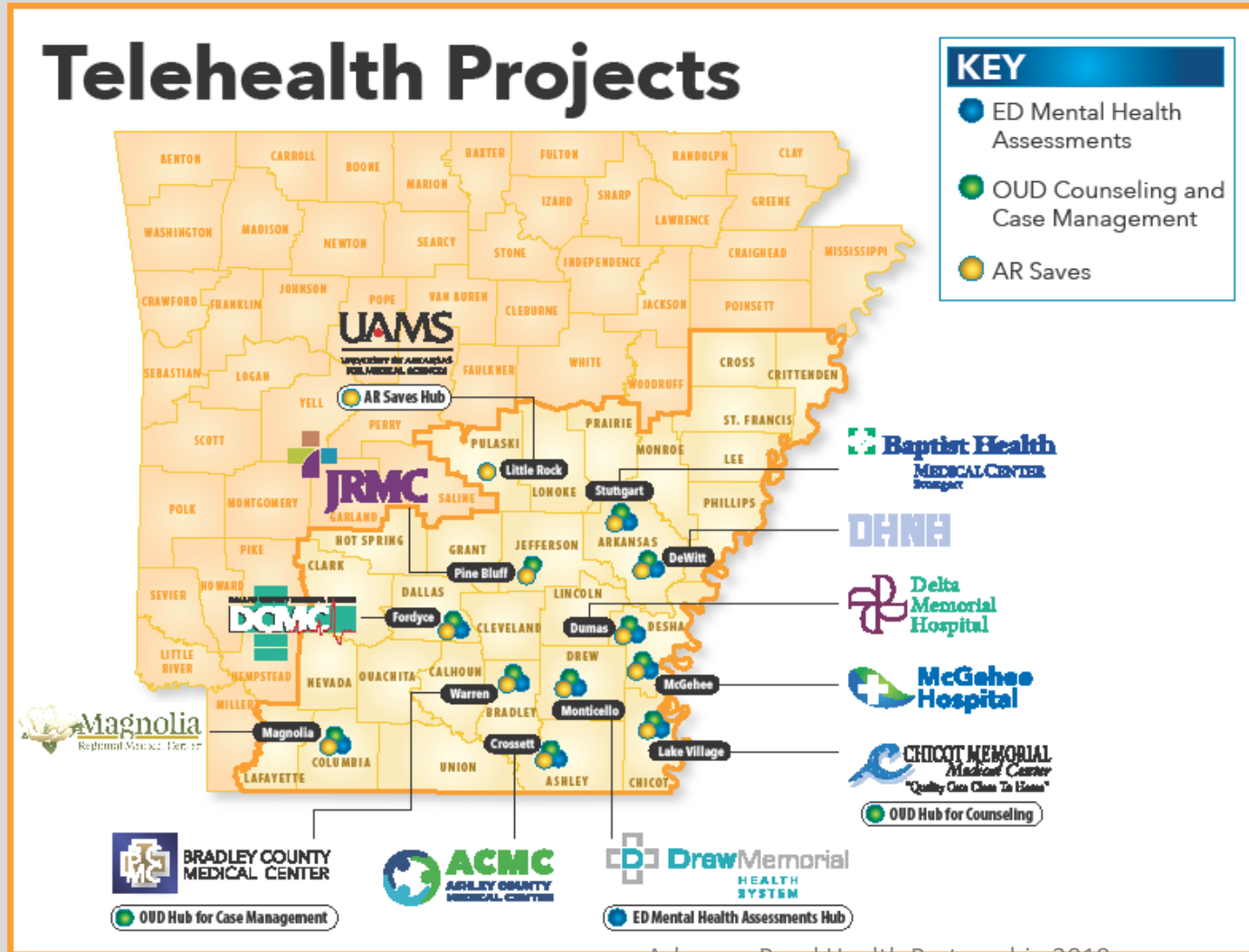


KEY	
★ DIABETES SUPPORT GROUPS/COOKING CLASSES	
• ARcare, England (Lonoke County)	• Dallas County Health Unit
• ARcare, Lonoke (Lonoke County)	• Drew Memorial Health System (Drew County)
• Ashley County Medical Center	• Jefferson Regional Medical Center (Jefferson County)
• Bradley County Medical Center	• UAMS East: Chicot, Desha, Lee, Monroe and Phillips counties
• Christian Health Center (Ouachita County)	
● DSME/T ACCREDITED SITE PROGRAMS IN PLACE	
• ARcare, Binkley (Monroe County)	• Baptist Health–Stuttgart (Arkansas County)
• ARcare, England	• Daughters of Charity, Dumas (Desha County)
• ARcare, Lonoke	• Daughters of Charity, Gould (Lincoln County)
• ARcare, Cabot (Lonoke County)	• Drew Memorial Health System, Monticello
• Ashley County Medical Center, Crosssett	• Jefferson Regional Medical Center
● DSME/T ACCREDITED SITE PROGRAMS IN PROGRESS	
• UAMS South Central, Pine Bluff (Jefferson County)	
● DPP ACCREDITED SITE PROGRAMS	
• Drew Memorial Health System	• UAMS East–Helena–West Helena

REGIONALIZED TELEHEALTH SERVICES

Through telehealth initiatives, ARHP member hospitals are providing needed services to other hospital members; thus building revenue service lines

Utilize Outside Resources as needed through collaboration

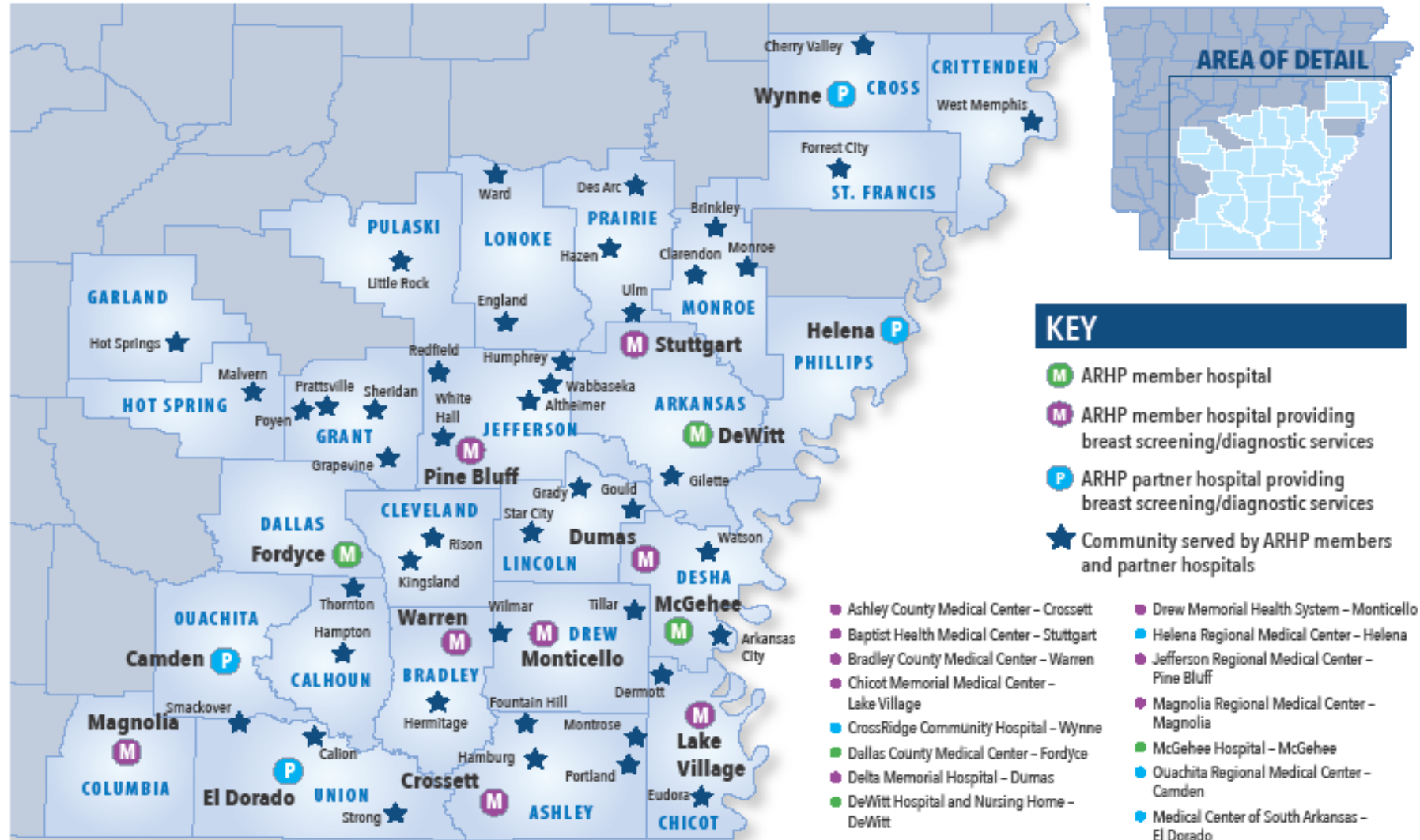


As demonstrated in the map, ARHP is creating HUBS within member organizations that are capable of providing services via telehealth to other member hospitals. This allows for those HUBS to create a revenue stream for their facility.

ARHP Member and Partner Hospitals Providing Breast Screening/Diagnostic Services



Continue to collaborate-
population health is
addressing all health
issues; big or small



Ensure Quality Care through healthcare provider training

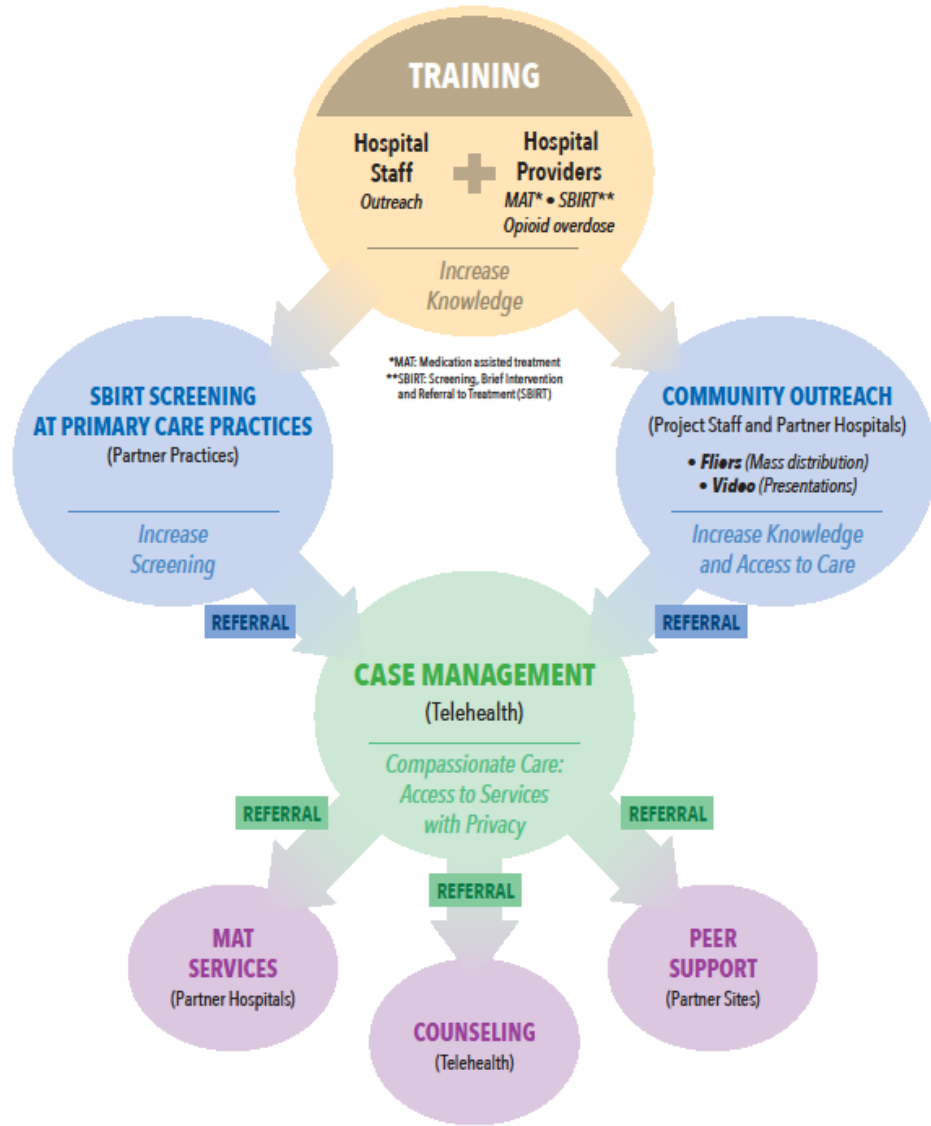
HEALTHCARE WORKFORCE TRAINING & EDUCATION INITIATIVES

Training and educational opportunities are provided on-site and by distance learning to healthcare workers through the Arkansas Delta region

On-Site Simulation Trauma Training & Certification
On-Site Simulation OB Training & Certification
On-Site Simulation Coding Training & Certification
On-Site Simulation Advanced Stroke Life Support Certification
On-Line Healthcare Education & Certification
On-Line Healthcare Orientation Education & Training
Stroke Ambushes

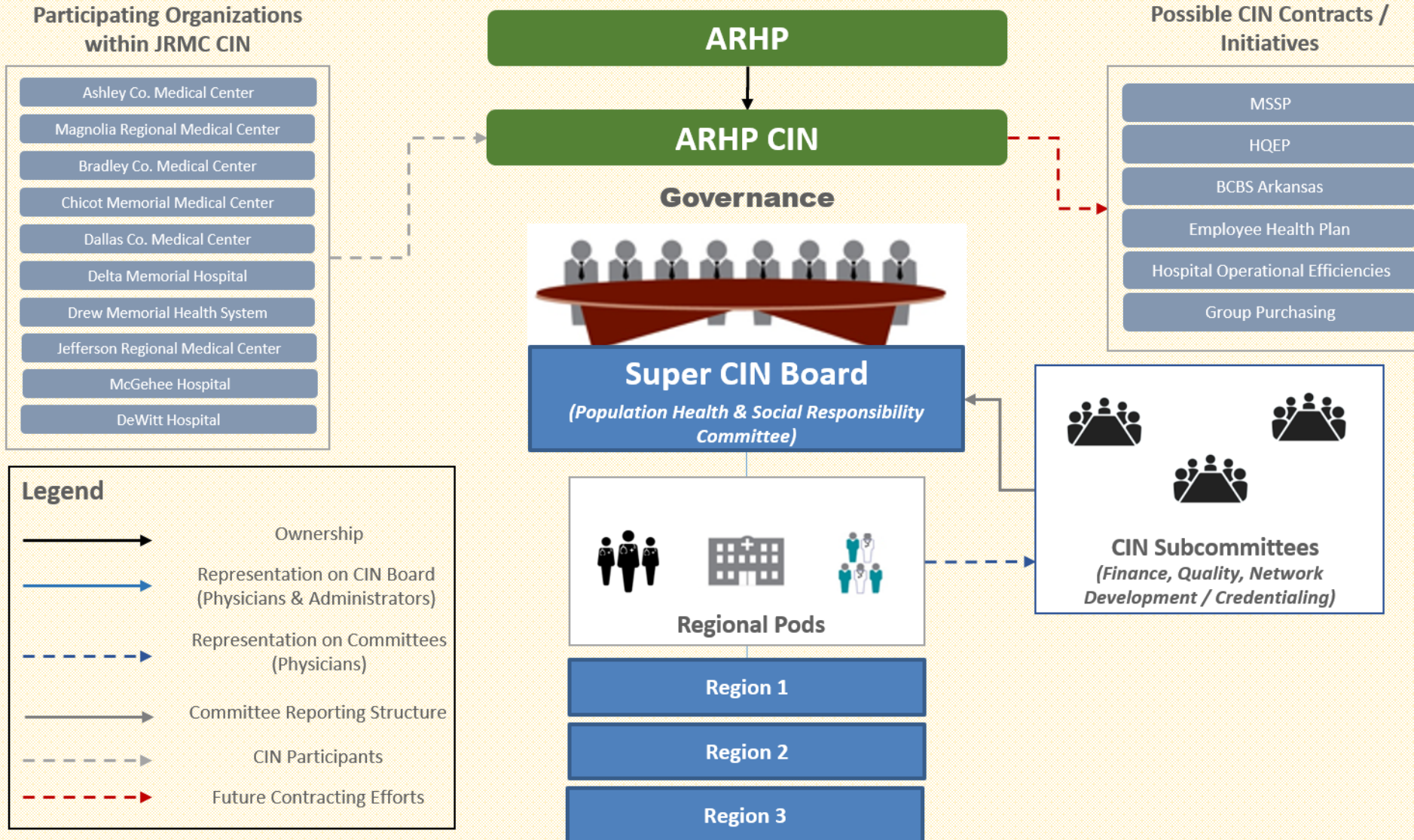
Diabetes Site Accreditation Assistance
Diabetes Educator Certification Assistance
Diabetes Empowerment Education Program (DEEP)
SAMHSA's SBIRT Training
Medication Assistance for Opioid Use Disorder Patients
Mental Health First Aid Training & Certification- Adult
Mental Health First Aid Training & Certification- Youth
Mental Health First Aid Training & Certification- Youth

Process of Care Overview



Individuals stay in recovery; drop in morbidity and mortality related to opioid use disorder (OUD)

ARHP REGIONAL CIN ORGANIZATIONAL MODEL



ARHP believes that a special kind of magic happens when community members and organizations sit at the same table to tackle the most complicated and critical health concerns of a region.

AR Rural Behavioral/ Mental Health Outreach Task Force
Community Health Needs Assessments
AR Delta ACT Coalition
Senator Rick Crawford's DREAM Council
AR Delta Community Response Task Force

Always keep in mind the power of the community's voice



Value-based care means reducing operational costs to be able to spend more money and time on quality of care

ARHP MANAGED SERVICE ORGANIZATION (MSO)

Through an organizationally owned MSO, members would have the benefits of cost savings on all service lines provided by the MSO directly as well as negotiated outside contract savings

Opportunities include:

Insurance- General and Professional Liability, Directors and Officers, Privacy and Security, Hired and Non-Owned Auto

Human Resources- Health Insurance/Flex Benefits, Workers' Compensation Insurance, Life Insurance, Long Term Disability, Background Checks, 401 (k) Retirement Plan

Provider Services- Credentialing, Insurance Paneling, Peer Review

Staffing Agency- Nursing, ED, Hospitalists, CRNAs, Locum

Coding, Billing, and Collection Services

Revenue Cycle Management

Contract Negotiation