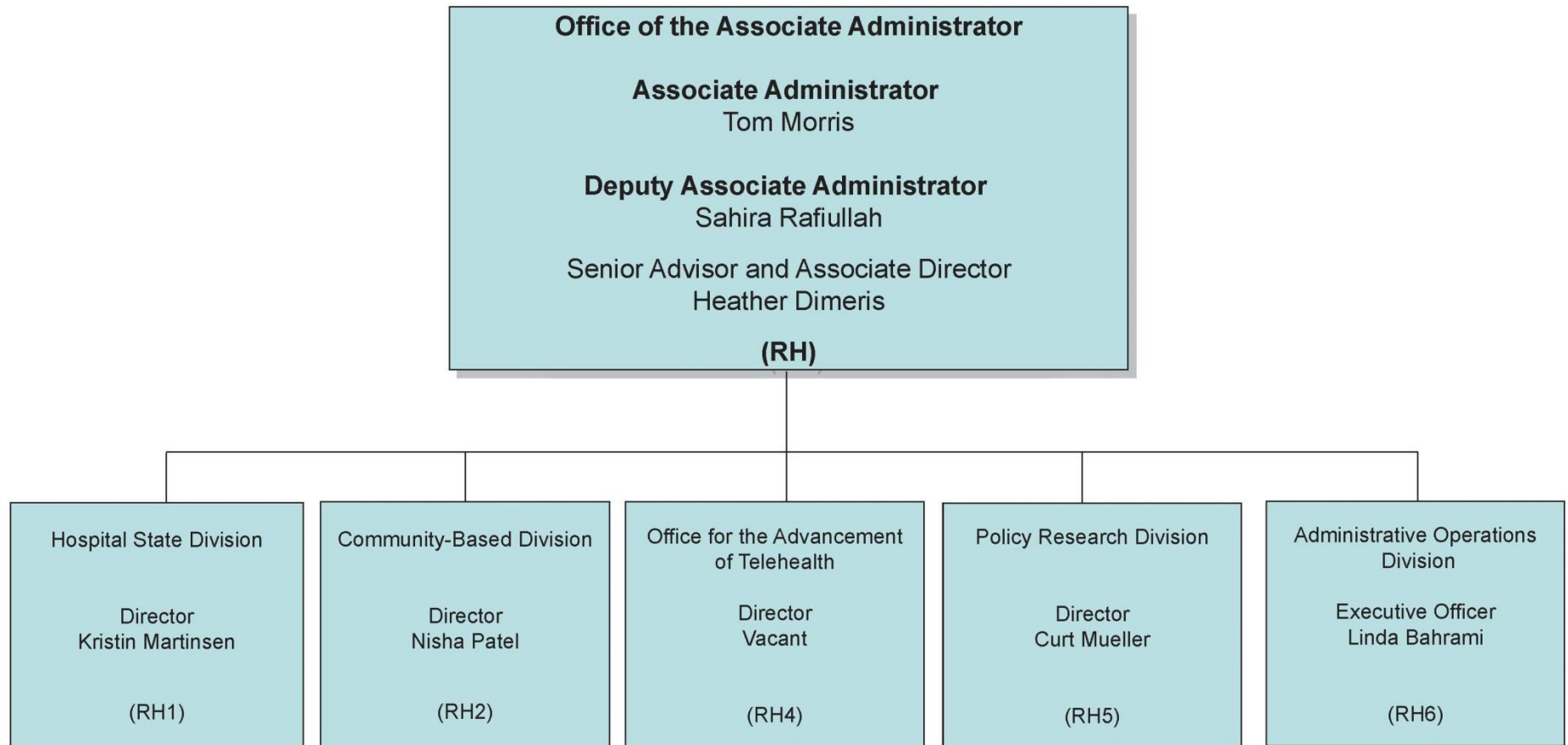


Federal Office of Rural Health Policy

3/1/2016



Community-Based Programs

Program	FY 2017	FY 2018	FY 2019
Rural Health Network Development Planning (Network Planning)	X <i>*Funding applications available Winter 2016</i>	X <i>*Funding applications available Winter 2017</i>	X <i>*Funding applications available Winter 2018</i>
Delta States Rural Health Development (Delta Program)			X <i>*Funding applications available Spring 2018</i>
Small Healthcare Provider Quality Program (Quality Program)			X <i>*Funding applications available Spring 2018</i>
Rural Health Care Services Outreach Program (Outreach Program)		X <i>*Funding applications available Fall 2017</i>	
Rural Health Network Development Program (Network Development)	X <i>*Funding applications available Fall 2016</i>		
Black Lung Clinics Program (BLCP) & Black Lung Centers of Excellence (BLCE)	X <i>*Funding applications available Winter 2016</i>		
Radiation Exposure Screening & Education Program (RESEP)	X <i>*Funding applications available Winter 2016</i>		

Community Health Gateway

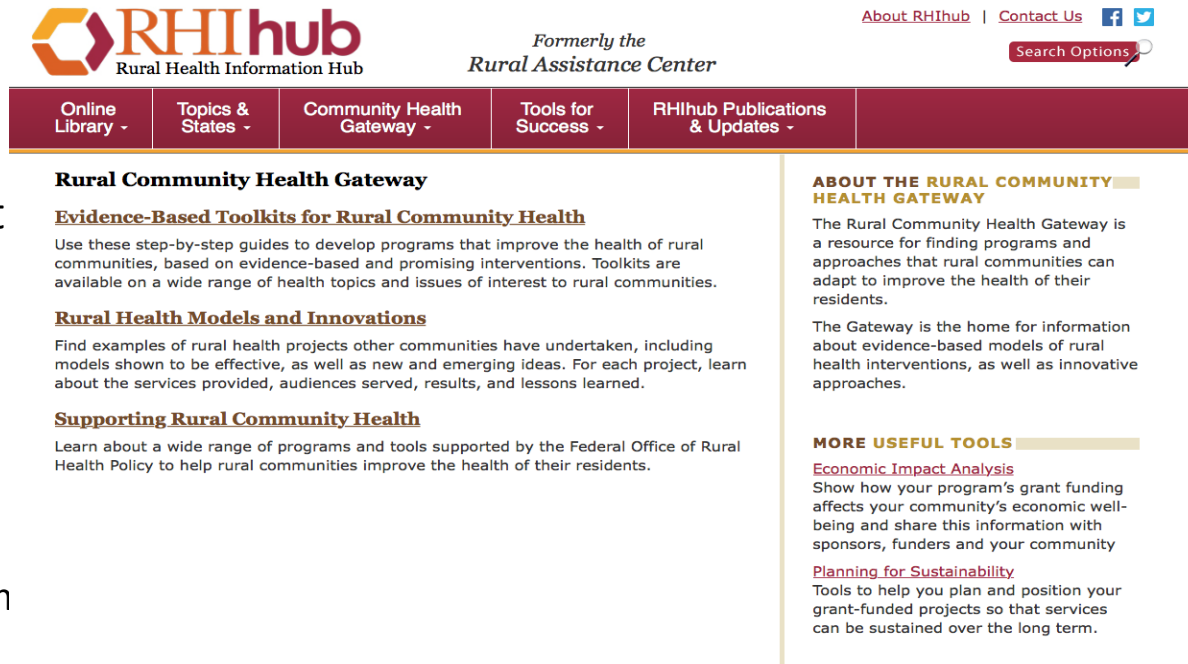
Toolkits

- Resources and best practices to help you identify and implement public health programs

Sustainability Tools

Rural Health Models and Innovations Hub

- Find examples of approaches you can adapt for your program, including models shown to be effective, as well as new and emerging ideas.



The screenshot shows the RHIhub website. At the top, the RHIhub logo is displayed with the text "Rural Health Information Hub" and "Formerly the Rural Assistance Center". To the right, there are links for "About RHIhub", "Contact Us", and social media icons for Facebook and Twitter. A search bar is also present. Below the header is a navigation menu with the following items: "Online Library", "Topics & States", "Community Health Gateway", "Tools for Success", and "RHIhub Publications & Updates". The main content area is titled "Rural Community Health Gateway". It features three sections: "Evidence-Based Toolkits for Rural Community Health" (with a description of step-by-step guides), "Rural Health Models and Innovations" (with a description of examples of rural health projects), and "Supporting Rural Community Health" (with a description of programs and tools supported by the Federal Office of Rural Health Policy). On the right side, there are two additional sections: "ABOUT THE RURAL COMMUNITY HEALTH GATEWAY" (describing the Gateway as a resource for finding programs and approaches) and "MORE USEFUL TOOLS" (listing "Economic Impact Analysis" and "Planning for Sustainability" with brief descriptions of each).

Rural Community Health Gateway

Evidence-Based Toolkits for Rural Community Health
Use these step-by-step guides to develop programs that improve the health of rural communities, based on evidence-based and promising interventions. Toolkits are available on a wide range of health topics and issues of interest to rural communities.

Rural Health Models and Innovations
Find examples of rural health projects other communities have undertaken, including models shown to be effective, as well as new and emerging ideas. For each project, learn about the services provided, audiences served, results, and lessons learned.

Supporting Rural Community Health
Learn about a wide range of programs and tools supported by the Federal Office of Rural Health Policy to help rural communities improve the health of their residents.

ABOUT THE RURAL COMMUNITY HEALTH GATEWAY
The Rural Community Health Gateway is a resource for finding programs and approaches that rural communities can adapt to improve the health of their residents.
The Gateway is the home for information about evidence-based models of rural health interventions, as well as innovative approaches.

MORE USEFUL TOOLS

Economic Impact Analysis
Show how your program's grant funding affects your community's economic well-being and share this information with sponsors, funders and your community

Planning for Sustainability
Tools to help you plan and position your grant-funded projects so that services can be sustained over the long term.

Economic Impact Tool

- Show how your program's grant funding affects your community's economic well-being

FORHP Grants in Motion



The screenshot shows the RHIhub website header with the logo and navigation menu. The main content area features an article titled "Rural Network Leads the Way with Intentional Collaboration" by Jenn Lukens, dated November 19, 2015. A callout box highlights that the article is funded by the Federal Office of Rural Health Policy, HRSA, and is part of the "FORHP Grants in Motion" series. The article text describes the Health Care Collaborative of Rural Missouri (HCC) and its impact on rural communities in West Central Missouri.

RHIhub
Rural Health Information Hub

The RURAL MONITOR

FEATURES | RURAL SPOTLIGHT INTERVIEWS | AROUND THE COUNTRY | RURAL INSIGHTS

NOVEMBER 19, 2015

Rural Network Leads the Way with Intentional Collaboration

by Jenn Lukens

Learn more about the [Health Care Collaborative of Rural Missouri](#) in RHIhub's [Rural Health Models & Innovations](#).

In just over ten years of existence, the [Health Care Collaborative of Rural Missouri \(HCC\)](#) has made a huge impact on the health and well-being of residents in West Central Missouri. Strong leadership, a clear strategy, a commitment to collaboration, and leveraging multiple funding sources has allowed them to cultivate partnerships and deliver quality healthcare to strengthen rural communities.

Funded by the
Federal Office
of Rural Health
Policy, HRSA

FORHP Grants in Motion

SUBSCRIBE

Sign up to receive notification of new Rural Monitor articles by email via RHIhub This Week

RSS Feed

STATES & TOPICS

Browse [articles by state](#)
Browse [articles by topic](#)

- Quarterly series in *Rural Monitor*
- Launched November, 2015
- Part of ongoing effort to highlight how FORHP grants are making a difference in communities
- Spotlights grantees that have used their grant funds to expand their networks, leverage additional funding, and have a measurable impact in their communities