



**Small Rural Hospital Improvement Grant Program (SHIP)  
FY 2021 Non-Competing Continuation (NCC) Guidance Webinar**  
*December 10, 2020*

**Hosted by:**

**National Rural Health Resource Center:  
Sally Buck**

**Federal Office of Rural Health Policy:  
Salamatu Barrie**

**Vision: Healthy Communities, Healthy People**



# Agenda

---

- SHIP Highlights & Updates
- COVID SHIP Highlights & Updates
- FY 2021 Program Deadlines & Priorities
- FY 2021 NCC Instructions & Attachments
- FY 2021 SHIP Allowable Investment Menu
- SHIP Allowable Investments Search Tool
- Resources & Contacts
- Questions



# SHIP Highlights & Updates

## SMALL RURAL HOSPITAL IMPROVEMENT GRANT PROGRAM (SHIP)

- Supports eligible small rural hospitals in meeting value-based payment through purchases of hardware, software and training.

- **PROGRAM OUTCOMES:**

- Improve cost savings
- Improve efficiencies
- Improve quality

June 1 2019 –  
May 31 2023



Value- Based Purchasing (VBP)



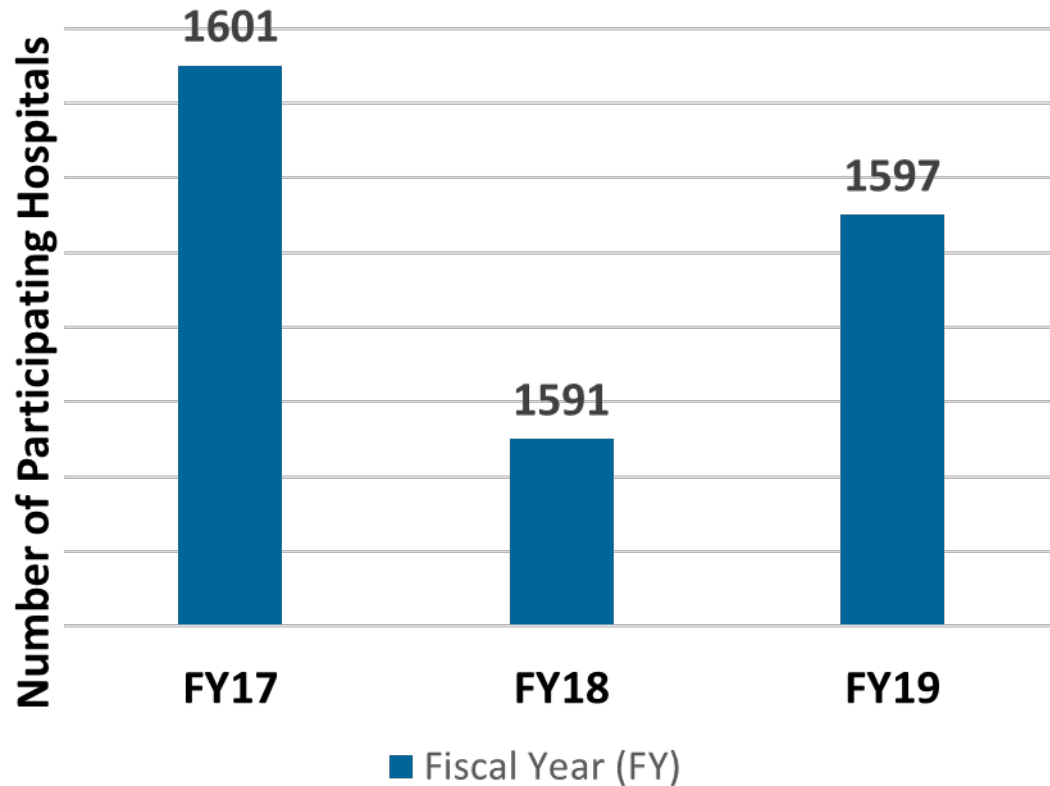
Accountable Care  
Organizations / Shared Saving



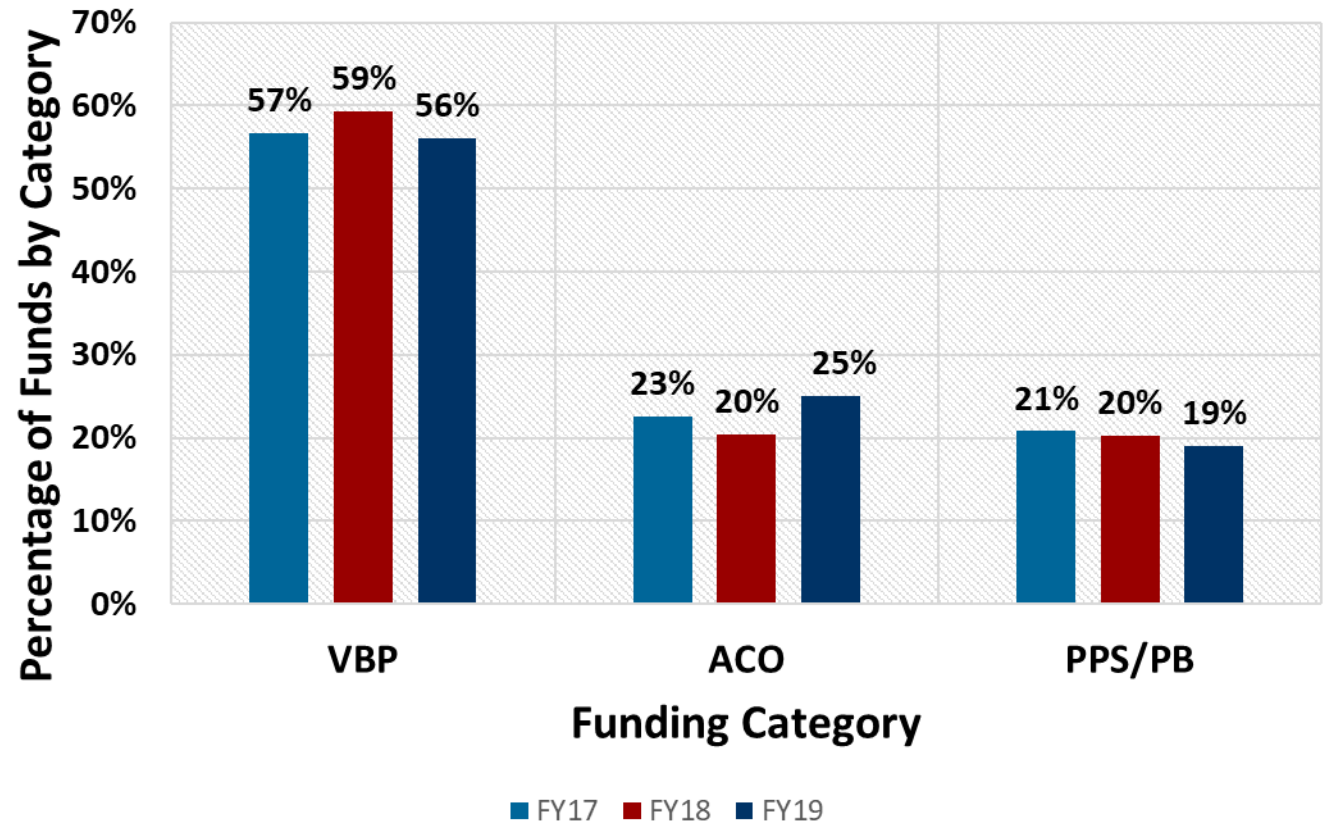
Payment Bundling (PB) / Prospective  
Payment System (PPS)

# SHIP Highlights & Updates (continued)

### Number of Participating Hospitals for FY17- FY19



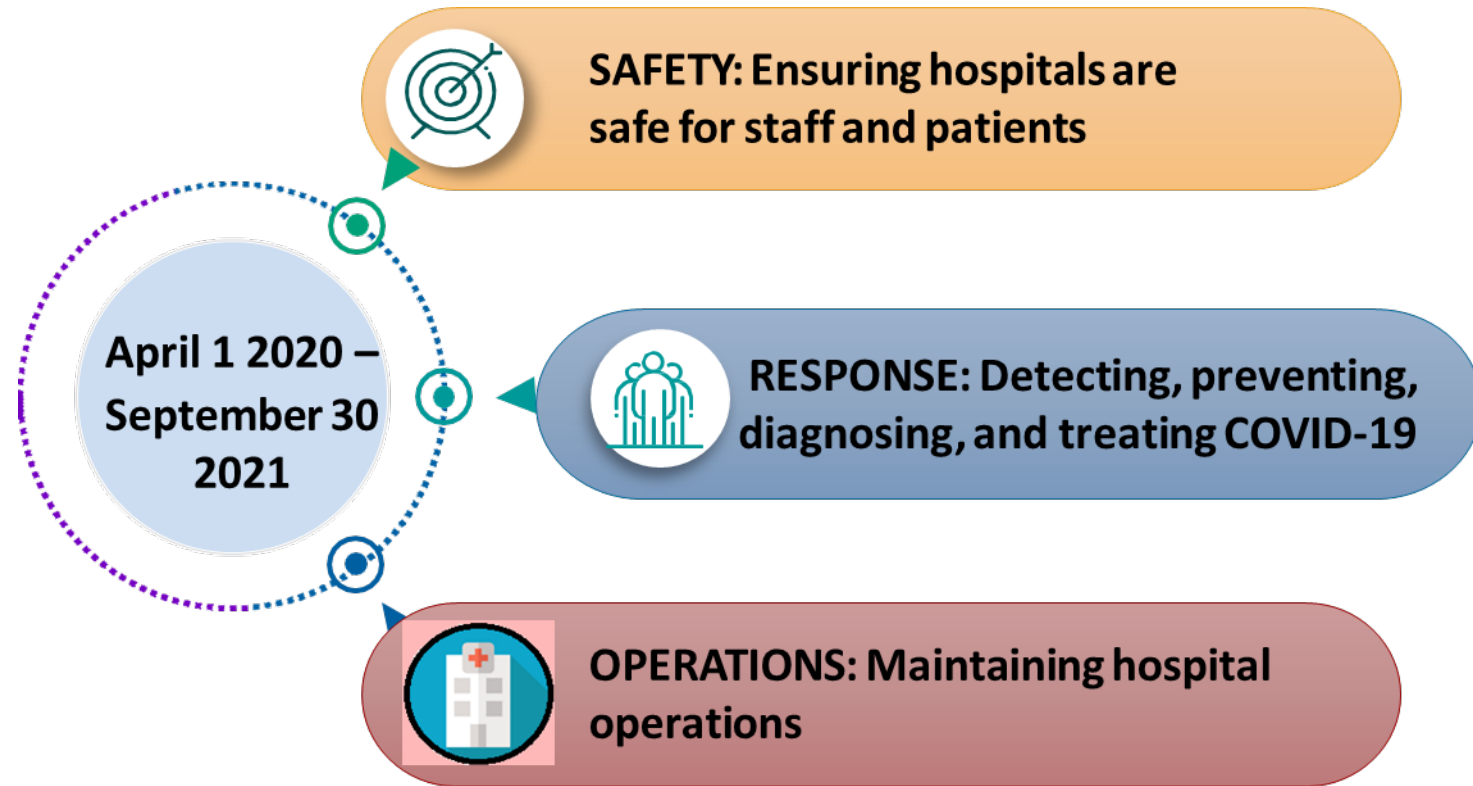
### Hospital Use of Funds by Category FY17 - FY19



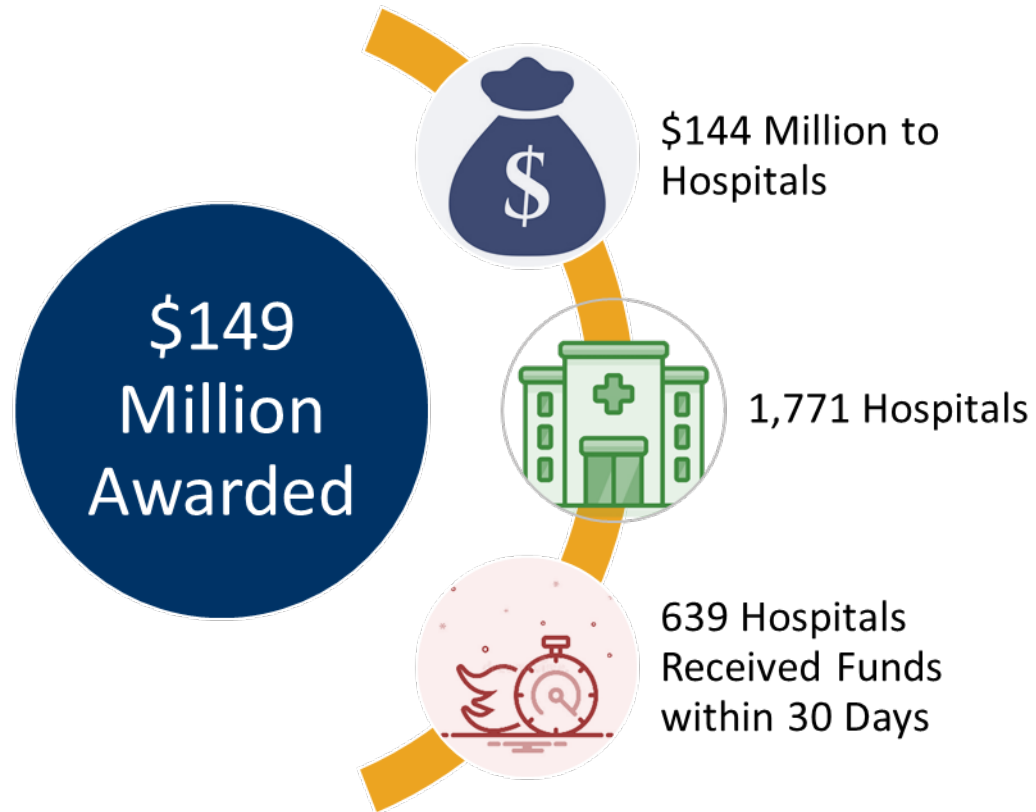
# COVID SHIP Highlights & Updates

## CORONAVIRUS SMALL RURAL HOSPITAL IMPROVEMENT GRANT PROGRAM (COVID SHIP)

- One-time funding to support hospitals prevent, prepare for, and respond to the coronavirus-related (COVID-19) public health emergency.



# COVID SHIP Highlights & Updates (continued)



[Home](#) > [Programs](#) > [SHIP](#) > Coronavirus Aid, Relief, and Economic Security (CARES) Act SHIP Funding

## Coronavirus Aid, Relief, and Economic Security (CARES) Act SHIP Funding

Health Resources and Services Administration's (HRSA) Federal Office of Rural Health Policy (FORHP) received funding through the Coronavirus Aid, Relief, and Economic Security (CARES) Act. HRSA will use CARES funding to assist hospitals that are eligible to be funded through the Small Rural Hospital Improvement Program (SHIP). One-time funding will provide support to hospitals to prevent, prepare for, and respond to the coronavirus-related (COVID-19) public health emergency. This includes:

- Ensuring hospitals are safe for staff and patients;
- Detecting, preventing, diagnosing, and treating COVID-19; and
- Maintaining hospital operations.

### Grant Management and Guidance

[FY 2020 CARES Supplemental Funding Guidance FAQs: April 2020 - October 2020](#) (PDF Document - 19 pages)



Available on the [CARES Act SHIP Funding](#) webpage on the SHIP website:  
<https://www.ruralcenter.org/ship/cares-act>

# FY 2021 Program

PROGRAM	REPORT	DUE DATE	REPORTING PERIOD
COVID SHIP	Quarterly Report (3)	1/30/2021	10/01/2020 - 12/31/2020
SHIP	<b>FY 2021 Non-Competing Continuation (NCC)</b>	<b>02/23/2021</b>	<b>06/01/2020 - 05/31/2021</b>
COVID SHIP	Quarterly Report (4)	4/30/2021	01/01/2021 - 03/31/2021
COVID SHIP	Quarterly Report (5)	7/30/2021	04/01/2021 - 06/30/2021
SHIP	FY 2020 Annual Report	8/29/2021	06/01/2020 - 05/31/2021
COVID SHIP	Quarterly Report (6)	10/30/2021	07/01/2021 - 09/30/2021



- On the [SHIP TA Website](#)
- FY 2021 NCC Progress Report Instructions and relevant attachments
  - FY 2021 SHIP Hospital Application Template Forms (A & B)
  - FY 2021 Allowable Investments
  - Allowable Investments Search Tool

For the full SHIP & COVID SHIP Calendar and Templates, visit the [SHIP TA website](#)



# FY 2021 Program (continued)

## PRIORITIES & FOCUS

### Highlighting Innovations and Sharing Best Practices

- Telehealth, Evaluation, and Value-based care

### Providing Guidance to SORHs

- Allowable Investment Activities
- SHIP Allowable Investment Search Tool
- Upcoming COVID SHIP FAQs and Minor Renovation Report Template

### Strengthening SORH's Evaluation and Data Collection Capacity

- Learning Collaboratives: Impact
- Consolidating and Summarizing COVID SHIP Data



# FY 2021 NCC Instruction & Attachments

**Reporting Period:** June 1, 2020- May 31, 2021

**Submit To:** HRSA EHB

<https://grants.hrsa.gov/webexternal/login.asp>

1. Click the View Portfolio link in the left side menu
2. Locate the grant for which you want to work on the NCC Progress Report and click the Open Grant Handbook link.
3. Click the Noncompeting Continuations link in the left side menu. Your pending NCC Progress Report will appear listed.
4. Click the Start Report or Edit Report link to access

Section
<b>Basic Information</b>
SF-PPR
SF-PPR-2 (Cover Page Continuation)
Performance Narrative
<b>Budget Information</b>
SF-424A Budget Information
Budget Narrative
<b>Appendices</b>
Attachment 1
Attachment 2
Attachment 3
Attachment 4
Attachment 5
Attachment 6
Attachment 7



# FY 2021 NCC Instruction & Attachments (continued)

SECTIONS	SUBMISSION TYPE	CORRESPONDING RESOURCES
SF-PPR	Form	See <a href="#">HRSA's EHB NCC Progress Report User Guide</a>
SF-PPR-2	Form	See <a href="#">HRSA's EHB NCC Progress Report User Guide</a>
Budget Information	SF-424 & Budget Narrative	See <a href="#">HRSA's EHB NCC Progress Report User Guide</a>
Performance Narrative	1 Attachment (Word or PDF)	See <a href="#">FY 2021 NCC Progress Report Instructions</a> available on EHB & <a href="#">SHIP TA Website</a>
Appendices	Separate Attachments	See <a href="#">FY 2021 NCC Progress Report Instructions</a> available on the <a href="#">SHIP TA Website</a>



**SF-424 & BUDGET NARRATIVE**  
**REMINDERS**

**SF-424A Form**

- (pre-populated in EHB)
- Reporting Period: June 1, 2021 – May 31, 2022
- 11,855 /Hospital

**Budget Narrative**

Budget should align with:

- SHIP's budget restrictions
- FY 2021 Allowable Investments
- HHS Allowable Cost ([45 CFR Part 75, Subpart E – Cost Principles](#))



# FY 2021 NCC Instruction & Attachments (further)

**\*Attachment 1:** FY 2020 Work Plan

**\*Attachment 2:** FY 2020 SHIP Activities Progress File

**\*Attachment 3:** FY 2021 Work Plan

**\*Attachment 4:** FY 2021 SHIP Hospital Funding Spreadsheet

**Attachment 5:** Special Innovations Project (SIP) Progress

**Attachment 6:** Rural Stakeholders COVID Response *(optional)*

**Attachment 7:** Other Relevant Documents

***\*Indicates Template Provided***

**Available on the SHIP website:**

**<https://www.ruralcenter.org/ship/grant-guidance>**



# FY 2021 NCC Instruction & Attachments (once more)

SERVICES

PROGRAMS

EVENTS

[Home](#) > [Programs](#) > [SHIP](#) > Grant Guidance

## Grant Guidance

### Downloads & Links

- [FY 2021 Hospital Application A](#) (Word - 3 pages)
- [FY 2021 Hospital Application B](#) (Word - 4 pages)
- [FY 2021 Allowable Investments](#) (PDF Document - 7 pages)
- [SHIP Grants Management and EHB: Guides and Links for Grantees](#) (PDF Document - 6 pages)
- [SHIP Prior Approval Request to Carryover Unobligated Funds](#) (PDF Document - 2 pages)
- [SHIP Prior Approval Process for Budget Revision](#) (PDF Document - 2 pages)
- [SHIP Prior Approval for Project Director and Key Staff Change](#) (PDF Document - 2 pages)
- [SHIP Carryover Request - Written Example](#) (Word - 2 pages)

**Author:** Federal Office of Rural Health Policy (FORHP)

FY2021 Grant Guidance materials and FY2020 archived materials found at:

<https://www.ruralcenter.org/ship/grant-guidance>

Topic	Description	Related Files
Non-Competing Continuation (NCC) Progress Report	The Non-Competing Continuation (NCC) Progress Report is the Health Resources and Services Administration's (HRSA) mechanism for renewing your budget period and releasing funding for your ongoing award. The NCC is designed to solicit program and budgetary related progress for the current reporting period (June 1, 2020- May 31, 2021) and to describe program activities for the upcoming reporting period (June 1, 2021- May 31, 2022) related to your Small Rural Hospital Improvement Program (SHIP) grant.	<a href="#">FY 2021 Noncompeting Continuation (NCC) Progress Report Instructions</a> (PDF Document - 7 pages)  <a href="#">FY 2021 NCC Attachment 1 - FY 2020 Work Plan</a> (Word - 1 page)  <a href="#">FY 2021 NCC Attachment 2 - FY 2020 SHIP Activities Progress File</a> (Excel)  <a href="#">FY 2021 NCC Attachment 3 - FY 2021 Work Plan</a>

FY 2021 Allowable Investments	List of example activities for each SHIP allowable investment category. These activities are examples for ways SHIP Coordinators can utilize their funds in each category to support SHIP activities. The list of activities are only examples and not meant to be an exhaustive list. If you have questions regarding whether or not an activity would be an allowable investment, contact your SHIP TA Center at <a href="mailto:ship-ta@ruralcenter.org">ship-ta@ruralcenter.org</a>	<a href="#">FY 2021 Allowable Investments</a> (PDF Document - 7 pages)
Grant Management	Created by FORHP, this document provides relevant links and guides to grantees about grant management and EHB.	<a href="#">SHIP Grants Management and EHB: Guides and Links for Grantees</a> (PDF Document - 6 pages)
Budget Revision, Carryover Requests and Project Director/Staffing changes	<p>Budget revisions and carryover requests need to be approved by your SHIP Program Officer. The documents provide detailed instructions on how to submit for a Prior Approval (PA) for budget revisions and carryover requests.</p> <p>Use the SHIP Prior Approval document for Project Director and key staff changes.</p> <p>The written example for SHIP Carryover Request provides language and an outline for a SHIP funds carryover request.</p>	<a href="#">SHIP Prior Approval Process for Budget Revision</a>  <a href="#">SHIP Prior Approval Request to Carryover Unobligated Funds</a>  <a href="#">SHIP Prior Approval for Project Director and Key Staff Change</a> (PDF Document - 2 pages)  <a href="#">SHIP Carryover Request - Written Example</a>

# FY 2021 NCC Instruction & Attachments (final)

Activities Progress FY2020 (June 1, 2020 - May 31, 2021)				
Hospital Name	Select activities hospitals participated in during FY 2020. (When clicking a cell, use the drop-down selection menu via the small arrow on the right)	Describe the specific activity selected in Column B such as type of equipment, software, or training.	FY2020 Progress: Select the level of progress to date, for the activities selected in Column B. (When clicking a cell, use the drop-down selection menu via the small arrow on the right)	Based on progress, list lessons learned and investment impact. Please detail information on progress made during the FY 2020 budget period (June 1, 2020 – May 31, 2021).
EXAMPLE: County General Hospital	Value-Based Purchasing (VBP) Investment Activities			
	Value-Based Purchasing (VBP) Investment Activities			
	E. Efficiency or quality improvement training/project in support of ACO or shared savings related initiatives	Team Steps for discharge planning & communication provided to 20 nurses.	Completed	To Date: * Prior to initiative, 38% of patients discharged to home reported that they had questions or concerns with discharge home medication lists upon their next doctor visit. That number has since been reduced by more than half.  * Seventy-four percent of patients surveyed stated they had a good understanding of their discharge.
	C. Disease registry training and/or software/hardware	Purchased software to support development and implementation of a disease registry.  <i>(If only one activity was selected by County General Hospital under the ACO/Shared Savings category, then you would leave this cell blank.)</i>	Started	To Date: County General Hospital is in the beginning stages of examining the automation of continuity of care records for use in patient referrals, hospital admissions and discharge, and disease registries for managing preventive care interventions and chronic diseases.
	Payment Bundling (PB) or Prospective Payment Systems (PPS) Investment Activities			
	Payment Bundling (PB) or Prospective Payment Systems (PPS) Investment Activities			
	Value-Based Purchasing (VBP) Investment Activities			

**Attachment 2: FY 2020 SHIP Activities Progress File**

# FY 2021 SHIP Allowable Investment Menu

## FY 2021 SHIP Allowable Investment Menu Key Update

### Suspending Priority Items (HCAHPS and ICD-10) for 2021

- HCAHPS priority supports the Medicare Beneficiary Quality Improvement Project
  - Highly encourage continued reporting for **CAHs**  
\*See *MBQIP Eligibility Requirements Policy Update email* sent by Natalia Vargas on November 23
- ICD-10 coding priority assists hospital's comply with CMS's ICD-10 billing requirements in October 2015.
- HCAHPS and ICD-10 related activities **will** remain on the FY 2021 Allowable Investment Menu.
- SHIP hospitals are **not** required to prioritize **HCAHPS** and **ICD-10** before selecting any other investment options on FY 2021 Investment Menu.

### Recommendations for FY 2021

- Hospitals **may** utilize funding to support quality improvement and/or healthcare finance requirements such as, but not limited, to:
  - Develop or implement training, hardware/software that supports the application and expansion of telehealth and/or telemedicine
  - Comply with CMS's Price Transparency rule
- Recommendation is **NOT** a priority item and hospitals will **NOT** be penalized for selecting any other investment options on FY 2021 Investment Menu.



# FY 2021 SHIP Investment Menu

## SMALL RURAL HOSPITAL IMPROVEMENT GRANT PROGRAM (SHIP) FY 2021

### ALLOWABLE AND UNALLOWABLE INVESTMENT ACTIVITY EXAMPLES

#### Clarification of Allowable and Unallowable Investments

The Small Rural Hospital Improvement Grant Program (SHIP) supports eligible hospitals in meeting value-based payment and care goals for their respective organizations, through purchases of hardware, software and training. [SHIP](#) also enables small rural hospitals: to become or join accountable care organizations (ACOs); to participate in shared savings programs; and to purchase health information technology (hardware and software), equipment, and/or training to comply with quality improvement activities, such as advancing patient care information, promoting interoperability, and payment bundling.

Unallowable investments include, but are not limited to, travel costs, hospital patient care services, hospital staff salaries, or general medical and office supplies. Additionally, SHIP funds may not be applied to support coronavirus-related (COVID-19) activities or be used to supplement program activities under the COVID-SHIP grant. The **FY 2021 Allowable Investment Menu** below outlines examples and suggested topic areas for trainings by category to assist eligible SHIP hospitals in planning and selecting activities. Hospitals should contact their State Office of Rural Health (SORH) with questions regarding the appropriateness or fit of a certain activity, training, or hardware/software purchase.

FY 2021 Allowable Investments	List of example activities for each SHIP allowable investment category. These activities are examples for ways SHIP Coordinators can utilize their funds in each category to support SHIP activities. The list of activities are only examples and not meant to be an exhaustive list. If you have questions regarding whether or not an activity would be an allowable investment, contact your SHIP TA Center at <a href="mailto:ship-ta@ruralcenter.org">ship-ta@ruralcenter.org</a>	<a href="#">FY 2021 Allowable Investments</a> (PDF Document - 7 pages)
-------------------------------	---	--

Available on the SHIP website:  
<https://www.ruralcenter.org/ship/grant-guidance>



# FY 2021 SHIP Allowable Investment Menu

## **Value-Based Purchasing**

- New example: patient safety, training and emergency preparedness
- New example: Alternative Payment Models: business perspectives

## **Accountable Care Organization/Shared Savings**

- New activity: social determinants of health screening software and training. Example: County Health Rankings and CDC Tools for SDOH
- New example: Project ECHO, Telehealth Resource Centers

## **Payment Bundling/Prospective Payment System**

- New example: revenue cycle management training/project and/or hardware/software
- New example: pricing transparency training or software





# FY 2021 SHIP Allowable Investment Menu - VBP

## Examples of Value-Based Purchasing (VBP) Investment Activities

VBP Investment Activities	Examples of Allowable Activities
C. Efficiency or quality improvement training in support of VBP related initiatives	<p>Consider adopting Six Sigma, Lean, Plan-Do-Study-Act, or other such efficiency or <a href="#">quality improvement</a> processes to address performance issues related to VBP initiatives, such as the following:</p> <ul style="list-style-type: none"><li>• <a href="#">Patient experience of care</a></li><li>• <a href="#">Discharge planning</a></li><li>• <a href="#">Patient safety</a></li><li>• <a href="#">Reducing readmissions</a></li><li>• <a href="#">Antibiotic stewardship</a></li><li>• <a href="#">Immunization</a></li><li>• <a href="#">Hospital Safety Training &amp; Emergency Preparedness*</a></li></ul>

\*New or expanded activities and examples



# FY 2021 SHIP Allowable Investment Menu – VBP (continued)

## Examples of Value-Based Purchasing (VBP) Investment Activities

VBP Investment Activities	Examples of Allowable Activities
E. Alternative Payment Model and Quality Payment Program training/education	<p>Software or training to prepare staff and physicians for the <a href="#">Quality Payment Program (QPP)</a>, which determines payment based on quality, resource use, clinical practice improvement, and meaningful use of certified electronic health record (EHR) technology.</p> <ul style="list-style-type: none"><li>• <a href="#">Quality Payment Program: Small, Rural, and Underserved Practices</a></li><li>• <a href="#">Physician and Provider Engagement and Alignment</a></li><li>• <a href="#">Population Health Management</a></li><li>• <a href="#">MACRA/MIPS Overview and Eligibility</a></li><li>• <a href="#">Alternative Payment Models: Business Perspective*</a></li></ul>

\*New or expanded activities and examples

# FY 2021 SHIP Allowable Investment Menu - ACO or Shared Savings

## Examples of Accountable Care Organization (ACO) or Shared Savings Investment Activities

ACO or Shared Savings Investment Activities	Examples of Allowable Activities
<p>C. Population health or disease registry training and/or software/hardware</p>	<p>Educational training, or hardware/software to support the development and implementation of a disease registry for <a href="#">care coordination</a>*.</p> <ul style="list-style-type: none"> <li>• <a href="#">Project ECHO</a>*</li> <li>• <a href="#">SHIP training: Care Coordination</a></li> </ul> <p>Software and training for analysis of <a href="#">population health needs</a> by chronic disease or geographic location for care management programs.</p> <ul style="list-style-type: none"> <li>• <a href="#">Population Health Toolkit</a></li> <li>• <a href="#">Population Health Management Technology</a></li> </ul>
<p>D. Social determinants of health (SDOH) screening software/training*</p>	<p>Software and training for analysis of <a href="#">social determinants of health</a> for improving health outcomes and care management programs.</p> <ul style="list-style-type: none"> <li>• <a href="#">County Health Rankings</a>*</li> <li>• <a href="#">CDC Tools for SDOH</a>*</li> </ul>

\*New or expanded activities and examples



# FY 2021 SHIP Allowable Investment Menu - ACO or Shared Savings (continued)

## Examples of Accountable Care Organization (ACO) or Shared Savings Investment Activities

ACO or Shared Savings Investment Activities	Examples of Allowable Activities
G. Telehealth and mobile health hardware/software	<p>Training hardware/software that supports the application and implementation of <a href="#">telehealth</a> and/or telemedicine. This does NOT include telecommunications. Tablets and hardware/software investments are allowed if they are used by staff to improve operational efficiencies and telehealth services.</p> <ul style="list-style-type: none"> <li>• Rural Telehealth <a href="#">Toolkit</a></li> <li>• <a href="#">Telehealth Resource Centers*</a></li> </ul>
I. Health Information Technology (HIT) training for value and ACOs	<p>SHIP supports HIT hardware/software and training, therefore, it would be beneficial to include risk assessments and/or trainings associated with cybersecurity.</p> <ul style="list-style-type: none"> <li>• <a href="#">Health Industry Cybersecurity Practices: Managing Threats and Protecting Patients (HICP) Guide</a></li> <li>• <a href="#">Healthcare and Public Health Sector Coordinating Councils guidelines for small, medium and large health care organizations to cost-effectively reduce cybersecurity risks*</a></li> <li>• <a href="#">Security Risk Assessment Tool</a></li> </ul>

\*New or expanded activities and examples



# FY 2021 SHIP Allowable Investment Menu - PB or PPS

## Examples of Payment Bundling (PB) or Prospective Payment System (PPS) Investment Activities

PB or PPS Investment Activities	Examples of Allowable Activities
E. Price transparency training, software or hardware	<p><b>SHIP funding priority – refer to above section</b></p> <p>Software or hardware to support hospital compliance with price transparency rule</p> <ul style="list-style-type: none"> <li>• <a href="#">SHIP Price Transparency Guide*</a></li> <li>• <a href="#">Price Transparency: Making the Most of the 2021 Requirement</a></li> </ul> <p>Training on <a href="#">revenue cycle management*</a> to improve processes that provide clear information about charges and cost to Medicare beneficiaries. Training examples:</p> <ul style="list-style-type: none"> <li>• <a href="#">Chargemaster, Pricing Transparency, Charges</a></li> <li>• <a href="#">Chargemaster Review</a></li> </ul>

\*New or expanded activities and examples



# SHIP Allowable Investments Search Tool

## Allowable Investments Search Tool

In general, SHIP allowable investments include activities to assist small rural hospitals with their quality improvement efforts and with their adaptation to changing payment systems through investments in hardware, software and related trainings. This includes aiding with value and quality improvement.

Unallowable investments include, but are not limited to, travel costs, hospital services, hospital staff salaries, or general supplies. Hospitals should contact their State Office of Rural Health (SORH) with questions regarding the appropriateness or fit of a certain activity or hardware/software purchase. For additional clarifications, refer to Frequently Asked Questions (FAQs).

This tool classifies a number of example investment activities as *Allowable*, *Unallowable*, or *PO Pre-Approval*. This is not a comprehensive list. It is only intended to provide examples of allowable SHIP activities.


### Search Investment Examples

Investment Status  
- Any -


Investment Category  
- Any -

[EXPAND KEYWORDS \(+\)](#)

Apply Reset

 **Patient iPad/Tablet**  
Unallowable

iPads, tablets, and other technology/hardware investments are not allowable for patient purposes.

 **Hospital Staff iPad/Tablet**  
PO Pre-Approval

iPads, tablets, and other technology/hardware investments may be allowable if they will be used by staff to support efficiencies.



# Contact Information

## SHIP TA Website

- [NCC Instructions & Attachments](#)
- [SHIP ALLOWABLE INVESTMENTS SEARCH TOOL](#)
- [SHIP Performance Management/Program Evaluation Guide & Webinar](#)

## SHIP TA Team

- Available to review submissions before **February 11<sup>th</sup>**
- [ship-ta@ruralcenter.org](mailto:ship-ta@ruralcenter.org)

## IT/Grants Resources

- [HRSA MANAGE YOUR GRANT Website](#)
- [EHB Help Desk](#)

## HRSA GMS

- [JAMES PADGETT](#)
- [KIMBERLY DEWS](#)
- [POTIE PETTWAY](#)
- [JESSICA SANDERS](#)
- [BEN WHITE](#)

## HRSA PO

- [SALLAY BARRIE](#)
- [JEANENE MEYERS](#)
- [PO MAP](#)



# Questions?

