



NATIONAL
RURAL HEALTH
RESOURCE CENTER

600 East Superior Street, Suite 404 | Duluth, MN 55802 | Ph. 800.997.6685 or 218.727.9390 | www.ruralcenter.org

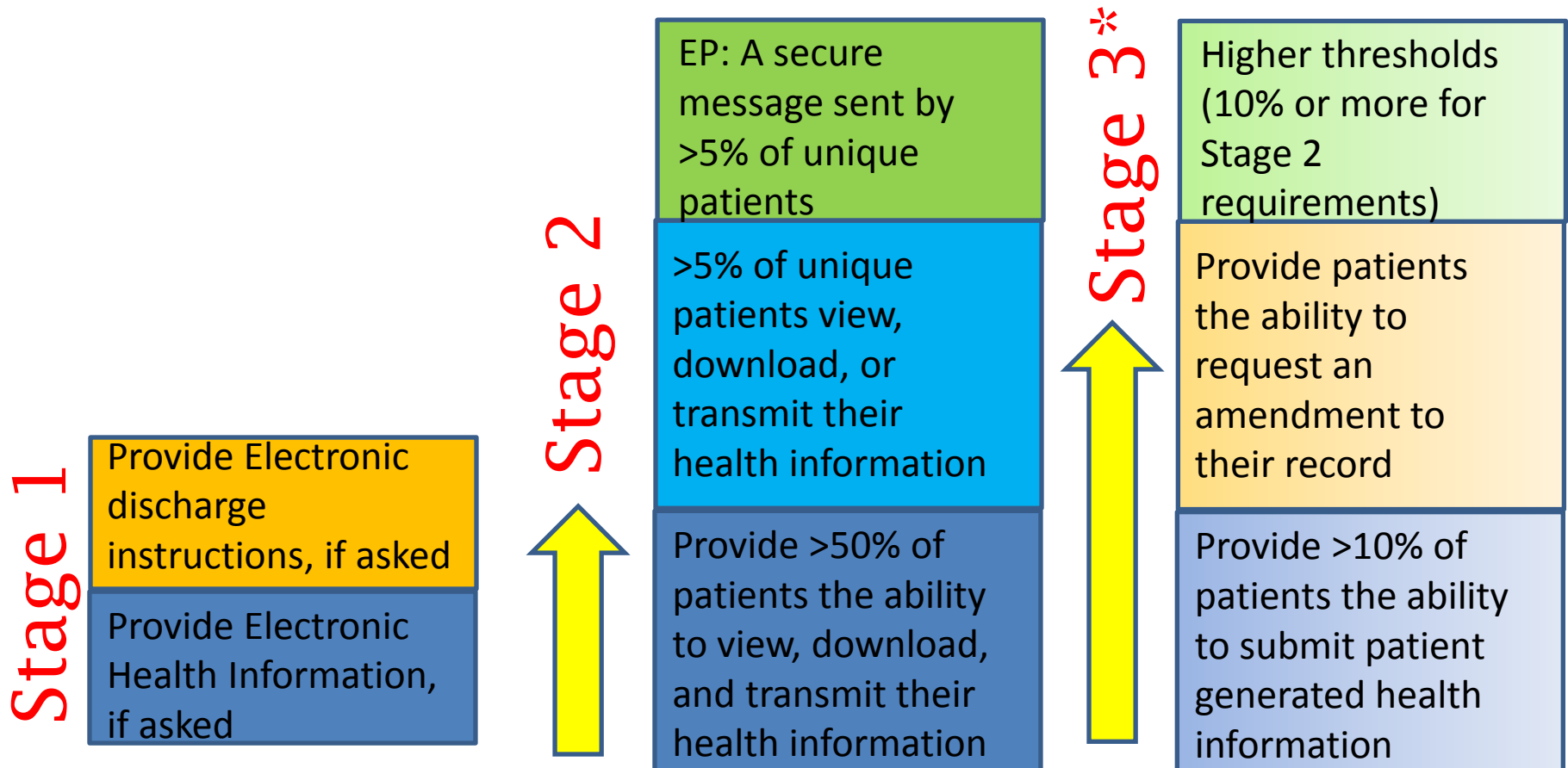
Successful Network Approaches for Improving Consumer Engagement

**RHITND All
Grantee
Meeting Panel**

March 2013



Evolution of Patient Engagement Requirements





Considerations

- Engaged planning
 - Community members
 - Local business and resources
 - Other health care providers
- Emphasis on safety and health benefits
- Workforce opportunities/challenges



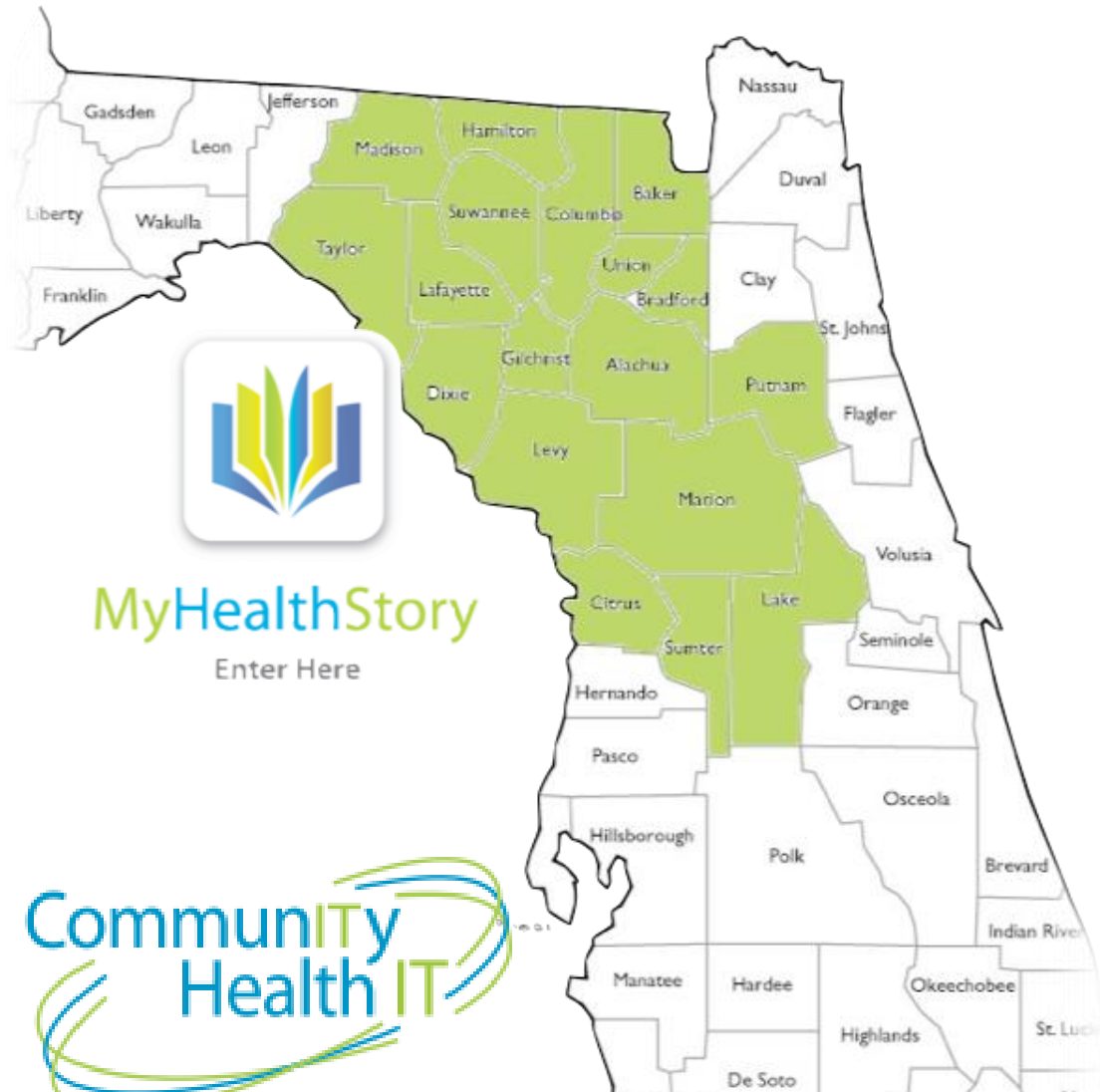
Considerations

- Options for collective strategy
 - Shared planning
 - Project management
 - Fee-for-service/part of dues
- Businesses as key component of strategy
- Include in network business plan



Rural Health PARTNERSHIP

- ✓ One of Florida's nine Federally-designated RHN
- ✓ Quasi-governmental, 501c(3) incorporated in 1996
- ✓ Staffed and fiscally managed by WellFlorida Council
- ✓ F.S.381.0406 charges RHNs with coordinating rural healthcare delivery systems and patient health information exchange
- ✓ The rural network has created a community-based healthcare utility for the entire region to utilize.



Has 49 regional and national organization strategic partners, including NH-ISAC.



MyHealthStory™

RelayHealth Platform

- Patient Consent
- Data Aggregation and Sourcing
- Patient Matching
- Cataloging
- Terminology Mapping
- Workflow

Solutions

- Longitudinal Patient Record
- Clinical Repository (all Clinical results)
- Patient Portal / PHR
- Record Locator Service
- Communication Solutions
 - Referral Management
 - Provider to Provider
 - Provider and Patient
 - webVisits
 - Appointment Requests
 - Prescription Refills
 - ED Notifications



Hospitals

ADT CCD HL7



Emergency Services

ADT CCD HL7

Marion County Fire Rescue
NCF Trauma Agency

Safety Net Providers

EHR

ADT CCD HL7

No EHR

Behavioral Health

EHR

ADT CCD HL7

Employed Providers

ADT CCD HL7

EHR

ADT CCD HL7

EHR

Patients



Community Providers

ADT CCD HL7

EHR

No EHR

Florida HIE

CCD



HIE Mission:

To give credentialed healthcare providers and their patients immediate access to relevant medical information anytime healthcare happens in a way that is:

- 1) secure and private
- 2) patient-friendly
- 3) physician-responsive
- 4) community-activated



Latest News

- 2/15/2013**
Gainesville doctors form group to help Medicare's efficiency
- 2/12/2013**
House committees propose SGR repeal plan
- 1/29/2013**
Critical access hospitals, physicians now eligible for Meaningful Use

COMMUNITY DIRECTORY Search Participating Businesses



MyHealthStory
Enter Here

Welcome to the CommunityHealth IT website!

With the support of 49 regional and national organizations, CommunityHealth IT™ is a non-profit entity designed to improve the health of our local communities through activated health information exchange (HIE) — the sharing of health information efficiently and securely anywhere in the world through an internet connection.

Search participating CommunityHealth IT™ businesses by clicking the button on the right of this webpage marked "COMMUNITY DIRECTORY."

CommunityHealth IT™ works to promote collaboration relating to HIE and health information technology (HIT) by addressing the barriers that slow HIT adoption among healthcare providers and institutions. Our mission is to give credentialed healthcare providers and their patients immediate

Toward this mission, CommunityHealth IT™ developed MyHealthStory™ — a personal health record for patients integrated as a longitudinal medical record for providers and robust HIE tools for healthcare practices and institutions. To build a stronger and healthier workforce, we invite businesses to learn more about the benefits of MyHealthStory™ and encourage their employees to register for this free service.

Together, healthcare communities "activated" through

Through MyHealthStory™, you can:

- consult your doctor about specific health symptoms
- request prescription refills
- request appointments
- receive lab or test results
- access health education information
- review your account details



Brookings Community Health Information Network (BCHIN)

Grant McAdaragh, MS
Community Health Information Network Director/Project Director



How did we get to where we are?

HIE Services Ranking Template

The Health Information Exchange (HIE) Services Ranking Template may be used to assist HIE organizations (HIOs) in ranking a list of

potential services that may be considered for offering. Many factors vary among HIOs, including stakeholder services and group weights.

This tool should be completed based on the factors specific to the HIO. To use the tool, follow these instructions:

1. Enter the name of each stakeholder group (e.g., hospitals, providers, payers, etc.).
2. Enter a weight to each stakeholder group on a scale from 1 to 10 (10 = high). Weight is determined based on a) the number and size of stakeholders within the group; b) the priority of connecting the group to the HIE; and c) the commitment of the group to use the HIE.
3. Enter HIE services and rate the perceived value of the service to each stakeholder group on a scale from 1 to 10 (10 = high).
4. View the Weighted Value column to see the rank of HIE services (Maximum Score = 100).

Major Considerations and Discussions

1. Enter Stakeholder Group (e.g., hospitals, payers, labs)	Avera Brookings Medical Clinic	Brookings Health System	United Retirement Center	Patients	Payers	Public Health									
2. Enter Stakeholder Weight	10	10	10	6	6	4									
3. Enter HIE Services and Perceived Value:	Perceived Value	Weight	Perceived Value	Weight	Perceived Value	Weight	Perceived Value	Weight	Perceived Value	Weight	Perceived Value	Weight	Perceived Value	Weight	Weighted Value (Average)
Continuity of Care Document	7.4	74	10	100	8.0	80	0.0	0.0	0.0	0.0	0.0	0.0	0.0	0.0	63.5
e-Prescribing/Med reconciliation	7.5	75	7.5	75	7.5	75	0.0	0.0	0.0	0.0	0.0	0.0	0.0	0.0	61.5
Immunizations	5.2	52	6	60	8.0	80	0.0	0.0	0.0	0.0	0.0	0.0	0.0	0.0	48.0
Lab Orders and Results	9.3	93	10	100	10.0	100	0.0	0.0	0.0	0.0	0.0	0.0	0.0	0.0	73.3
Images	9.0	90	8	80	5.8	57.5	0.0	0.0	0.0	0.0	0.0	0.0	0.0	0.0	56.9
Notes/Reports	9.2	92	9	90	9.5	95	0.0	0.0	0.0	0.0	0.0	0.0	0.0	0.0	66.3
Eligibility and pre-authorizations	5.8	58	7.6	76	5.0	50	0.0	0.0	0.0	0.0	0.0	0.0	0.0	0.0	46.0
Quality Reporting	2.8	28	4.0	40	2.8	27.5	0.0	0.0	0.0	0.0	0.0	0.0	0.0	0.0	27.4
Patient Portal/PHRs	9.4	94	7.4	74	8.8	88	0.0	0.0	0.0	0.0	0.0	0.0	0.0	0.0	64.0
Provider Portal	7.0	70	7	70	7	70	0.0	0.0	0.0	0.0	0.0	0.0	0.0	0.0	45.9
Disease Surveillance	2.6	26	4.7	47	3.0	30	0.0	0.0	0.0	0.0	0.0	0.0	0.0	0.0	25.8
Syndromic Reporting	3.0	30	3	30	3	30	0.0	0.0	0.0	0.0	0.0	0.0	0.0	0.0	39.6

Third Party Solutions vs. Vendor Specific Portal

Portal that can integrate multiple HCIS's

Branding issues

Functions for patients

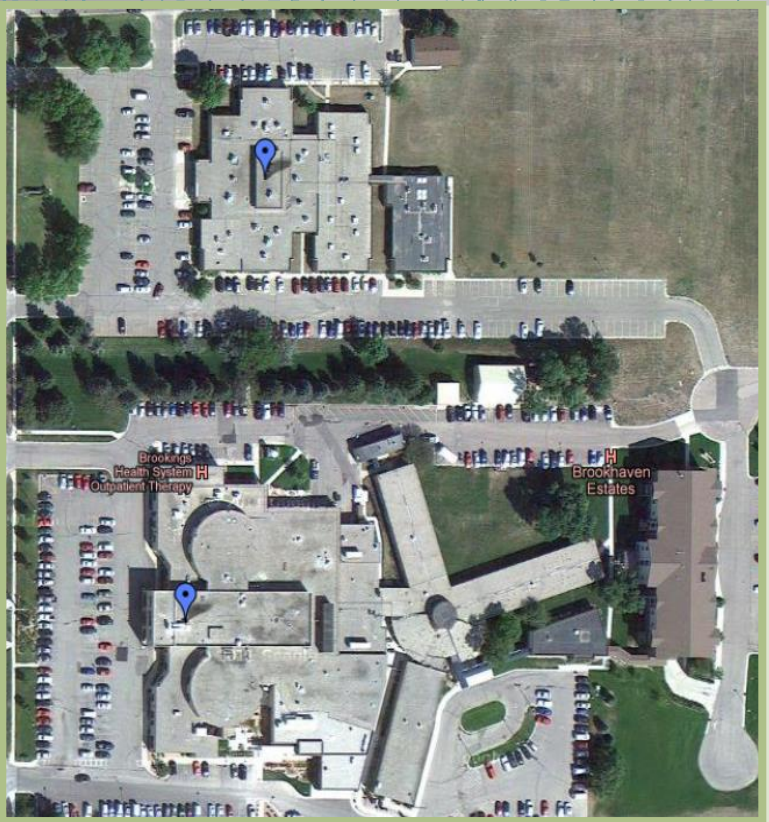
"Usability"

Beyond Stage 2 Requirements

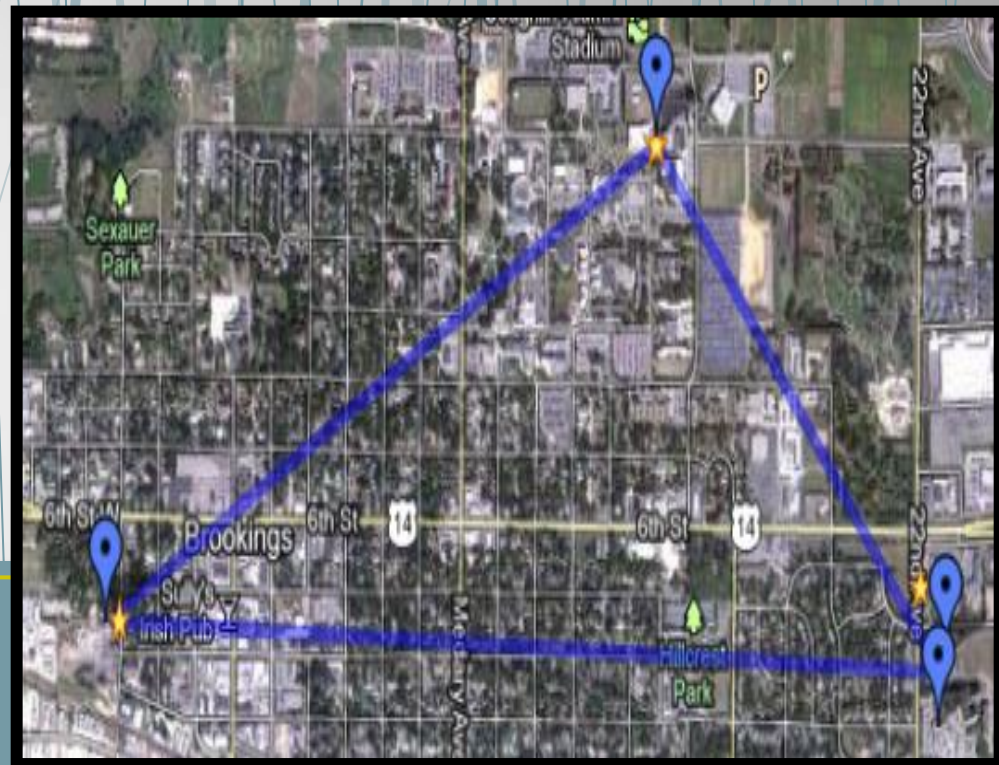
Cost and Sustainability

Combined Patient Engagement Reporting

Educate the Brookings Community



Total Distance to all member sites: 4.2 miles



Distance between members

- ABMC to BHS..... 500 ft.
- ULC to BHS..... 1.8 miles
- SDSU SH to BHS..... 1.0 miles

Unique Challenges for BCHIN

- Local community/service area
- Multiple HCIS's
 - Meditech Client/Server, Meditech LSS and Point Click Care
 - Working to add Mediat EMR in the near future
- Portal Branding
 - Facility Recognition
 - Patient identification and trust
- Patient engagement/ Meaningful Use Reporting
 - Common Reporting for all entities

Still an ongoing project...



PROJECT
infoCARE
NETWORK

Southwest Missouri



PROJECT
infoCARE
NETWORK

Southwest Missouri



- Citizens Memorial Hospital
- Cedar County Memorial
- Bolivar OB/GYN
- Bolivar Family Care
- Central Care Cancer Center
- Kemp Family Eye Care
- R Lane Nutt, OD
- Swearingen & Burton, OD
- Family Vision Center



PROJECT
infoCARE
NETWORK

Southwest Missouri

- 2002-2005 CMH implements Meditech in hospital, LTC and clinics
- 2007 BFCC implements AllScripts
- 2011 Remaining partners begin work toward MU



Patient Engagement Calendar



At CMH, it's our goal to have healthy patients. We've worked to gather resources to help you be your healthiest self. Each month of 2013, we'll be focusing on different health topics.



Upcoming Events

It's not too late to sign up for health-minded events in your area.



Healthy Profiles

This month features three CMH Employees that are racing their way to better health.



Where You Live

Find resources in your community to get your new year started right.



Downloads

Download printable copies of health tracking logs and other resources.



There's an App for That

There's a lot of options for fitness and healthy eating apps.



More Ideas and Information

Learn how to dress for cold weather workouts, how you can sneak fitness into your daily routine and more.

PROJECT infoCARE NETWORK

Social Media



Patient Portals

For your convenience we have links to local healthcare provider's patient portals. Click on the link below to log in and view your health record and communicate with your provider and their staff.



Patient Portals

PROJECT
infoCARE
NETWORK 





NATIONAL
RURAL HEALTH
RESOURCE CENTER

Karrie Ingram

Network Director
Project Infocare Network
(417) 328-6251
kingra@citizensmemorial.com

Grant McAdaragh

Community Health Information
Network Director
Brookings Community Health
Information Network
(605) 696-8826
gmcadaragh@brookingshealth.org

Sally Trnka

Senior Program Coordinator
National Rural Health Resource
Center
(218) 727-9390 ext. (233)
strnka@ruralcenter.org

David Willis, M.D.

Chief Medical Information Officer
CommunityHealth IT Network
willisfp@me.com